

part
(3)Exams
on the First Term

► **Contents:**

- Al-Adwaa MCQ Model Exams
- MCQ Governorates Exams 2020-2021
- Combined Model Exams
(Selected from 2019-2020 Governorates Exams)
- Final Exams 2019-2020

Ongoing Assessment & Exams

Al-Adwaa MCQ Model Exams

(Answer Guide P. 40)

Model 1

Choose the correct answer:

- equals the mass of one paper clip.
a. Gram b. Newton c. Kilogram d. Liter
- If your weight on the moon's surface is 50 N, then your weight on the earth's surface is
- The acceleration of gravity of the earth (g) equals
- The liquid that is used in the manufacturing of thermometers is
- The lower point of the Celsius thermometer is and it represents the melting point of ice.
- is one of the examples of heat conductors.
- To prevent the leakage of heat, insulating glass windows contain a layer of
- Circle the letter of the sentence that is true about nitrogen.
- Circle the letter of the sentence that is true about oxygen.

10. Circle the letter of the sentence that is true about carbon dioxide.
- a. It is not essential for life. b. It is given off by animals as a waste product.
c. It is used by animals to digest food d. It is needed by fuels to burn
11. The most abundant element in the earth's atmosphere is
- a. water b. nitrogen c. oxygen d. carbon dioxide
12. The element whose percentage is very little about 0.03% is
- a. water b. nitrogen c. oxygen d. carbon dioxide
13. is a form of oxygen with 3 oxygen atoms in each molecule.
- a. Ozone b. Nitrogen c. Oxygen d. Carbon dioxide
14. Which of the following gases form water molecule? –
- a. Hydrogen and oxygen b. Nitrogen and oxygen
c. Oxygen and nitrogen d. Carbon dioxide and nitrogen
15. Nitrogen oxide is formed during the
- a. ammonia industry b. lightning
c. bread industry d. fermentation
16. All the following are from the constituents of the human skeletal system except
- a. skull b. rib cage c. backbone d. spinal cord
17. The myelin sheath surrounds the
- a. axon on the nerve cell b. spinal cord
c. cerebellum d. brain
18. The human rib cage protects the
- a. heart b. lungs c. brain d. (a) and (b)
19. The joint which allows the movement in one direction only is called
- a. immovable b. freely movable c. slightly movable d. no correct answer
20. The neuron is the building unit of the
- a. skeletal system b. nervous system
c. muscular system d. locomotory system

Ongoing Assessment & Exams

Model 2

Choose the correct answer:

- The mass of half a liter of water equals
a. 5 g b. 50 g c. 5000 g d. 500 g
- If your weight on the earth's surface is 600 N, then it is on the moon's surface.
a. 6 N b. 60 N c. 100 N d. 10 N
- If the mass of an object on the moon = 60 kg, then its weight on the earth =
a. 60 Kg b. 60 N c. 100 N d. 600 N
- All the following substances are good conductors of heat except
a. iron b. copper c. plastic d. aluminum
- Wool is considered
a. a heat insulator b. a heat conductor
c. a good conductor of heat d. (b) and (c)
- Celsius is the measurement unit of
a. weight b. temperature c. volume d. mass
- The melting point of ice is
a. 0°C b. 100°C c. 37°C d. 42°C
- When oxygen combines with an element, the mass of the product is the mass of the element.
a. more than b. less than c. equal to d. double
- Oxygen combines with lighted magnesium forming a white material called
a. iron oxide b. magnesium oxide
c. magnesium dioxide d. manganese dioxide
- The chemical structure of carbon dioxide gas is
a. O₂ b. H₂O c. CO d. CO₂

11. happens when carbon dioxide percentage increases, causing the earth's temperature to increase.
 a. Fermentation b. Oxidation c. Global warming d. Combustion
12. During lightning, is formed.
 a. nitrogen oxide b. copper oxide c. carbon dioxide d. magnesium oxide
13. Fertilizers contain
 a. oxide b. ammonia
 c. ammonia and carbon dioxide d. magnesium oxide
14. When oxygen combines rapidly with elements and produces heat and light, this union is called
 a. combustion b. oxidation c. neutralization d. decomposition
15. Photosynthesis process in plants depends on the presence of
 a. oxygen b. ozone c. carbon dioxide d. nitrogen
16. The controls the voluntary movements such as running in a race.
 a. cerebrum b. cerebellum
 c. medulla oblongata d. spinal cord
17. The vertebral column is a series of vertebrae that protect the
 a. spinal cord b. cerebrum c. cerebellum d. (b) and (c)
18. The number of spinal nerves is pairs.
 a. 31 b. 12 c. 21 d. 43
19. The protects the spinal cord.
 a. skull b. backbone c. femur d. humerus
20. The human rib cage consists of pairs of ribs.
 a. 43 b. 33 c. 12 d. 31

Ongoing Assessment & Exams

Model 3

Choose the correct answer:

- The measuring unit of mass is
a. Newton b. kilogram c. liter d. centimeter
- If the weight of a body is 2 N, then its mass is
a. 0.2 g b. 20 g c. 200 g d. 2 g
- The weight of an object that is 40 kg equals
a. 40 N b. 400 N c. 4 N d. 4000 N
- Aluminum conducts heat faster than
a. copper b. iron c. glass d. (a) and (b)
- Which of the following conducts heat faster? –
a. Iron b. Aluminum c. Copper d. Glass
- All the following are among the properties of mercury as a thermometric substance except that
a. it is a good conductor of heat
b. its expansion is regular
c. it gives a limited extent to measure the temperature
d. it does not stick to the walls of the capillary tube
- Mercury remains in the liquid state between °C.
a. 39 : 357 b. 39 : -357 c. -39 : 357 d. 0 : 100
- When adding lemon to sodium bicarbonate, evolves.
a. ozone b. nitrogen c. oxygen d. carbon dioxide
- Respiration and combustion processes consume gas.
a. oxygen b. nitrogen c. argon d. carbon dioxide
- Carbon dioxide gas is collected by the
a. upward displacement of air b. upward displacement of water
c. downward displacement of air d. downward displacement of water

11. is formed when burning cigarettes.
- a. Ozone b. Nitrogen c. Oxygen d. Carbon dioxide
12. Carbon dioxide is used in
- a. making dry ice b. making soft drinks
c. extinguishing fires d. (a), (b) and (c)
13. The molecule of nitrogen gas consists of of nitrogen.
- a. one atom b. two atoms c. three atoms d. four atoms
14. The scientist who discovered nitrogen gas was
- a. Celsius b. Priestley c. Rutherford d. Lavoisier
15. Nitrogen is used in the manufacturing of
- a. soft drinks b. dry ice c. fertilizers d. fire extinguisher
16. The system interprets the external stimuli and makes the body respond to them.
- a. digestive b. respiratory c. nervous d. circulatory
17. The nerve cell consists of
- a. nucleus b. cytoplasm
c. plasma membrane d. (a), (b) and (c)
18. is/are from the reflex actions.
- a. Heartbeats
b. Eating when we are hungry
c. Blinking of eyelids when something comes close to them
d. All the previous answers
19. All the following systems participate in the process of movement except the
- a. nervous system b. skeletal system
c. muscular system d. digestive system
20. Among the freely movable joints are joints.
- a. knee b. thigh c. elbow d. joints of the skull

Ongoing Assessment & Exams

Model 4

Choose the correct answer:

- All the following scales are examples of scales that are used to measure mass except the
 - one-pan scale
 - balance scale
 - spring scale
 - sensitive two-pan scale
- is the gravitational force acting on a body's mass.
 - Weight
 - Mass
 - Newton
 - Kilogram
- The weight of any object by increasing its mass.
 - remains constant
 - decreases
 - increases
 - no correct answer
- Heat transfers from
 - a hot object to a cold one
 - a cold object to a hot one
 - a heat conductor to a heat insulator
 - a heat insulator to a heat conductor
- When you touch a cup of hot tea, heat transfers from
 - the hand to the cup
 - the cup to the hand
 - (a) and (b)
 - otherwise
- We can measure the temperature of boiling water using the
 - medical thermometer
 - Celsius thermometer
 - thermostat
 - clinical thermometer
- Before using the medical thermometer, we shake it to
 - sterilize it
 - clean it from dust
 - force mercury to go back to the bulb
 - (a) and (b)
- is a gas that contributes in composing gunpowder. (Suez 2014)
 - Oxygen
 - Carbon dioxide
 - Nitrogen
 - Argon
- The gas which is used to fill some types of lamps is
 - oxygen
 - nitrogen
 - hydrogen
 - carbon dioxide

10. When adding lemon to sodium bicarbonate, evolves.
 a. ozone b. nitrogen c. oxygen d. carbon dioxide
11. Carbon dioxide dissolves in water.
 a. scarcely b. easily c. never d. extremely
12. Clear limewater is calcium
 a. carbonate b. hydroxide c. oxide d. metal
13. Rust is the layer formed when iron and oxygen react in humid air.
 a. magnesium oxide b. iron oxide c. white d. hydrogen peroxide
14. Bridges are covered with to protect them from rusting.
 a. alkaline b. acid c. wax d. paint
15. protects the earth from ultraviolet radiations.
 a. Ozone b. Nitrogen c. Oxygen d. Carbon dioxide
16. All the following systems participate in the process of movement except the
 a. nervous system b. skeletal system
 c. muscular system d. digestive system
17. The axial skeleton consists of all the following parts except the
 a. skull b. backbone c. rib cage d. upper limbs
18. The connect(s) the brain to the spinal cord.
 a. cerebrum b. cerebellum
 c. medulla oblongata d. axon terminals
19. The brain is protected by the
 a. skull b. backbone
 c. vertebral column d. (a) and (b)
20. Centers of thinking and memory are located in the
 a. medulla oblongata b. cerebrum
 c. cerebellum d. spinal cord

Ongoing Assessment & Exams

Model 5

Choose the correct answer:

- The weight of any object when the distance between the body and the center of the Earth increases.
 - remains constant
 - decreases
 - increases
 - no correct answer
- The weight of an object on equals 6 times its weight on the moon's surface.
 - Mars
 - Earth
 - Jupiter
 - Neptune
- If an object's mass on the earth's surface is 6 kg, then its weight on the moon's surface is
 - 6 kg
 - 6 N
 - 60 N
 - 10 N
- The degree of hotness or coldness of a body is called
 - heat
 - temperature
 - thermometer
 - magnetism
- Heat conductors are used in
 - making of kettles
 - making of cooking pots
 - making of handles of kettles
 - (a) and (b)
- Each degree in the medical thermometer is divided into parts.
 - 3
 - 5
 - 6
 - 10
- Before using the clinical thermometer, we must sterilize it to
 - warm the mercury
 - prevent mercury from returning easily
 - force the mercury to go back to the bulb
 - kill microbes
- Nitrogen is used to make
 - thermometers
 - steel
 - soft drinks
 - all the previous answers
- The main source of nitrogen is
 - air
 - water
 - carbon dioxide
 - (a) and (b)

10. All the following are organic compounds except
- a. manganese dioxide b. coal
c. wood d. gasoline
11. The gas which makes limewater turbid is
- a. oxygen b. nitrogen c. carbon dioxide d. hydrogen
12. The chemical formula of oxygen molecule is
- a. CO₂ b. O₂ c. O₄ d. O₃
13. Hydrogen peroxide decomposes in the presence of manganese dioxide to
- a. oxygen and hydrogen b. oxygen and water
c. hydrogen and water d. hydrogen and manganese
14. Oxygen is collected by the displacement of
- a. upward-water b. downward-air
c. downward-water d. upward-air
15. gas is prepared by adding dilute hydrochloric acid to calcium carbonate.
- a. Oxygen b. Nitrogen c. Carbon dioxide d. Neon
16. The peripheral nervous system consists of
- a. 43 pairs of nerves b. 31 pairs of nerves
c. 12 pairs of nerves d. 44 pairs of nerves
17. The controls the reflex actions.
- a. spinal cord b. cerebellum c. cerebrum d. brain
18. The part which is responsible for the transfer of nerve messages from different body parts to the brain and vice versa is the
- a. cerebellum b. vertebral column
c. medulla oblongata d. spinal cord
19. The humerus bone is one of the bones of the
- a. lower limbs b. upper limbs c. axial skeleton d. skull
20. The location at which the bones meet together is called
- a. tendon b. joint c. humerus d. no correct answer

Ongoing Assessment & Exams

MCQ Governorates Exams (2020 - 2021)

(Answer Guide P. 40)

1 Cairo - El-Zeitoun Educational Directorate

Choose the correct answer:

- is a measuring tool of weight.
 - Sensitive balance
 - Spring scale
 - Thermometer
 - Two-pan balance
- If the weight of an object on the earth's surface is 60 Newton, then its weight on the moon's surface is
 - 60 Newton
 - 10 Newton
 - 6 Newton
 - 100 Newton
- joint is from freely movable joints.
 - Shoulder
 - Knee
 - Elbow
 - Skull
- gas makes limewater turbid.
 - Nitrogen
 - Oxygen
 - Carbon dioxide gas
 - Ozone

2 Cairo - Al-Sahel Directorate

Choose the correct answer:

- All the following substances are good conductors of heat except
 - iron and copper
 - copper and aluminum
 - glass and wood
 - iron and aluminum
- If an object's mass on the earth's surface is 30 kgs, then its weight on the earth is
 - 30 Newton
 - 300 kg
 - 300 Newton
 - 50 Newton
- is a gas that is used in distinguishing fire.
 - CO₂
 - O₂
 - N₂
 - H₂
- The bony box that contains cavities and protects the brain is from the
 - axial skeleton
 - perpendicular skeleton
 - muscular skeleton
 - nervous system

3 Cairo - Al-Basateen & Dar El-Salam Educational Directorate

Choose the correct answer:

- The device that is used for measuring weight is called
 - one arm scale
 - two-arm scale
 - digital scale
 - spring scale
- The number of the cranial nerves is pairs of nerves.
 - 31
 - 21
 - 12
 - 5
- The cerebellum is responsible for
 - thinking process
 - the body's balance
 - the reflex action
 - the sleeping processes

4. The thermometer whose scale starts from 35 to 42 is
 a. medical thermometer
 b. laboratory thermometer
 c. alcoholic thermometer
 d. no correct answer

4 Giza - Al-Sheikh Zayed Educational Directorate

Choose the correct answer:

- The human rib cage consists of pairs of ribs.
 a. 10
 b. 12
 c. 13
 d. 11
- From the materials that are good conductors of heat is
 a. plastic
 b. glass
 c. iron
 d. wood
- Weight is measured by using a scale.
 a. spring
 b. sensitive
 c. balance
 d. measuring cylinder
- The function of the skull is
 a. keeping the body balance
 b. controlling the reflex action
 c. protecting the spinal cord
 d. protecting the brain

5 Giza - EL-Agouza Educational Directorate

Choose the correct answer:

- The fastest metal in conducting heat is
 a. copper
 b. iron
 c. aluminum
 d. gold
- The gravitational force for an object whose mass is 3 kg is
 a. 3N
 b. 300N
 c. 3000N
 d. 30N
- The carbon dioxide is used in the industry of
 a. steel
 b. gunpowder
 c. fertilizers
 d. soft drinks
- The axial skeleton consists of all of the following except
 a. the skull
 b. the vertebral column
 c. the limbs bones
 d. the rib cage

6 Giza - Bolaq El-Dakroul Educational Directorate

Choose the correct answer:

- The joints which allow movement in one direction only are called
 a. immovable
 b. slightly movable
 c. freely movable
 d. unlimited
- The weight (Newton) = the mass (kilogram) X
 a. 10
 b. 100
 c. 1000
 d. 6
- The liquid that is used in the manufacture of thermometers is
 a. methyl alcohol
 b. water
 c. mercury
 d. oil
- The cooking pots are made up of
 a. plastic
 b. aluminum
 c. wood
 d. carbon

Ongoing Assessment & Exams

7 Aswan - Aswan Educational Directorate

Choose the correct answer:

- From the materials that are bad conductors of heat is
a. iron b. copper c. wood d. aluminum
- Nitrogen is the most important part of
a. proteins b. carbohydrates c. fats d. water
- The number of cranial nerves is pairs of nerves.
a. 31 b. 21 c. 33 d. 12
- The device that is used for measuring weight is
a. one-arm scale b. two-arm scale c. digital scale d. spring scale

8 Sharkia - West Zagazig Educational Directorate

Choose the correct answer:

- nearly equals the mass of one paper clip.
a. Kilogram b. Gram c. Newton d. Ton
- Nitrogen represents of the earth's atmosphere.
a. 90% b. 21% c. 0.03% d. 78%
- The bulb of the medical thermometer is filled with
a. water b. oil c. mercury d. alcohol
- The best metal in conducting heat is
a. copper b. aluminum c. iron d. mercury

9 Menofia - Berket ElSabaa Educational Directorate

Choose the correct answer:

- An object whose weight is 20 Newton on Earth, its mass is equal to
a. 20 kg b. 10 kg c. 2 kg d. 200 kg
- The main idea of thermometer is changing the of the liquid according to temperature.
a. mass b. volume c. weight d. color
- Oxygen reacts with nitrogen in the event of lightning composing compounds known as
a. ozone b. nitrogen c. nitrogen oxide d. potassium hydroxide
- controls reflex action.
a. Heart b. Spinal cord c. Cerebellum d. Cerebrum

10 Suez - South Educational Directorate

Choose the correct answer:

- The device that is used for measuring weight is
a. two-arm scale b. digital scale c. spring scale d. gram
- The liquid that is used in making the medical thermometer is
a. water b. mercury c. alcohol d. copper
- Nitrogen gas represents of the atmosphere.
a. 21% b. 78% c. 1% d. 56%
- The cerebellum is responsible for
a. thinking process b. the body's balance c. the reflex action d. heartbeats

11 Port Said - North Educational Directorate

Choose the correct answer:

- From the measuring units of weight is
a. gram b. liter c. Newton d. kilogram
- The best metal in conducting heat is
a. aluminum b. copper c. iron d. wood
- Oxygen gas is present in the atmosphere in the form of molecule, its structure is
a. O b. O₂ c. O₃ d. O₄
- The number of cranial nerves is pairs of nerves.
a. 31 b. 21 c. 12 d. 33

12 Luxor - Al Qarna Educational Directorate

Choose the correct answer:

- The weight of a body is measured by balance.
a. spring b. sensitive c. double pans d. all the previous
- The gas which is used with acetylene in welding metals is gas.
a. oxygen b. nitrogen c. hydrogen d. carbon dioxide
- is a bad conductor of heat.
a. Copper b. Glass c. Aluminum d. Iron
- The part which is responsible for keeping the balance of the human body is
a. two cerebral hemispheres b. cerebellum
c. medulla oblongata d. spinal cord

Ongoing Assessment & Exams

Combined Model Exams

(Selected from 2019/2020 Governorates Exams)

(Answer Guide P. 4)

Model 1

1 Complete the following sentences:

1. We can measure the mass of jewels by using tool, while we can measure the weight of an object by using tool.
2. The bones of limbs are connected to shoulder bones, while the bones of limbs are connected to pelvic bones.
3. The graduation of medical thermometer starts from°C to°C.
4. The plant absorbs in the photosynthesis process, while the gas is produced.
5. The number of cranial nerves equals pairs, while the number of spinal nerves equals pairs.

2 Choose the correct answer:

1. The liquid which is used in medical thermometer is
(water – alcohol – mercury)
2. The gas is used in making soft drinks.
(oxygen – nitrogen – carbon dioxide)
3. controls the reflex actions.
(Spinal cord – Medulla oblongata – Cerebellum)
4. is responsible for maintaining the body balance during the movement.
(Medulla oblongata – Spinal cord – Cerebellum)
5. is used as a catalyst during the preparation of oxygen.
(Manganese dioxide – Iron – Nitrogen)

3 A) Put (✓) or (X) and correct the false ones:

1. Copper is the best heat conductor. ()
2. Oxygen gas occupies 0.03% of the atmospheric air components. ()
3. The skull has immovable joints. ()

B) If an object's mass = 6 kg on the earth's surface, calculate.

1. Its mass on the moon.
.....
2. Its weight on the earth.
.....
3. Its weight on the moon.
.....

4 A) Write the scientific term for each of the following:

1. A gas used by legumes in the formation of proteins. (.....)
2. A gas consists of three atoms of oxygen. (.....)
3. The measuring unit of mass which equals the mass of one liter of distilled water at the normal temperature. (.....)

B) Give a reason for each of the following.

1. Handles of cooking utensils are made of wood or plastic.
.....
2. Carbon dioxide gas is collected by upward displacement of air.
.....

Ongoing Assessment & Exams

Model 2

1 Complete the following sentences:

1. There is a constriction in the thermometer.
2. The number of cranial nerves in the human body is and the number of spinal nerves is
3. Weight is measured by, while mass is measured by
4. In the photosynthesis process, the plant absorbs gas and produces gas.
5. is the degree of hotness or coldness of a body.

2 Choose the correct answer:

1. is a good conductor of heat. (Plastic – Copper – Glass)
2. Nitrogen represents % of the earth's atmosphere. (21 – 0.03 – 78)
3. Skull joints are (immovable – slightly movable – freely movable)
4. The largest part of the brain is
(cerebellum – cerebrum – medulla oblongata)
5. Nitrogen forms an important part in
(protein – carbohydrate – fats – water)

3 A) Write the scientific term for each of the following:

1. Mixture of gases surrounding the earth. (.....)
2. The building unit of the nervous system. (.....)
3. The liquid which is used in thermometers. (.....)
4. The flame that is used in cutting and welding metals. (.....)

B) Mention one function or one use for each of the following.

1. The spinal cord.
.....
2. The Celsius thermometer.
.....

4 A) Put (✓) or (X) and correct the false ones:

1. Handles of cooking pots are made of plastic. ()
2. Carbon dioxide molecule consists of one oxygen atom combined with two carbon atoms. ()
3. Cerebellum contains centers of thinking and memory. ()

B) If an object's mass is 5 kg on earth, calculate:

1. Its mass on the moon.
.....
2. Its weight on the earth.
.....

Ongoing Assessment & Exams

Model 3

1 Complete the following sentences:

1. Mass is measured by, whereas weight is measured by
2. Oxygen gas is a and odorless gas.
3. In the photosynthesis process the plant absorbs gas and produces gas.
4. gas turns the clear limewater turbid due to forming which doesn't dissolve in water.
5. The human system consists of axial and appendicular skeletons.

2 Choose the correct answer:

1. The best metal in conducting heat is
a. aluminum b. iron c. copper
2. Oxygen gas is collected by displacing
a. air upwards b. water downwards c. water upwards
3. controls the reflex action.
a. Spinal cord b. Cerebellum c. Cerebrum
4. is from freely movable joints.
a. Skull b. Knee c. Shoulder
5. We cannot live without
a. oxygen b. carbon dioxide c. both of them

3 A) Put (✓) or (X) and correct the false ones:

1. Cooking pots and kettles are made up of plastic. ()
2. Nitrogen gas is called azote which means life gas. ()
3. The number of spinal nerves is 31 pairs. ()
4. The skull has immovable joints. ()

B) Give a reason for the following statements:

1. The medical thermometer has a constriction.

.....

2. Rib cage surrounds both the heart and lungs.

.....

4 A) Write the scientific term:

1. The measuring unit of weight which is almost equal to the mass of 100 grams. (.....)
2. A gas used in making soft drinks. (.....)
3. The main control center in the human body. (.....)

B) Correct the underlined words.

1. The scale of the Celsius thermometer starts from 35°C to 42°C.
2. Nitrogen represents 21% of the volume of the atmosphere.
3. The temperature of the oxyacetylene flame reaches 5300°C.
4. There are joints between the vertebrae of the backbone.

Ongoing Assessment & Exams

Model 4

1 Complete the following sentences:

1. The scale of the medical thermometer starts from°C and ends at°C.
2. The neuron consists of two main parts and
3. The knee joint is considered from joints, while the wrist joint is considered from joints.
4. The measurement unit of mass is, whereas the measurement unit of weight is
5. Oxygen gas is prepared in the laboratory from in the presence of

2 Choose the correct answer:

1. The liquid that is used in making medical thermometer is
(water – alcohol – mercury)
2. The gas is used in making soft drinks.
(oxygen – nitrogen – carbon dioxide)
3. controls the reflex actions.
(Spinal cord – Medulla oblongata – Cerebellum)
4. is responsible for maintaining the body balance during the movement.
(Medulla oblongata – Spinal cord – Cerebellum)
5. is used as a catalyst during the preparation of oxygen.
(Manganese dioxide – Iron – Nitrogen)

3 A) Write the scientific term for each of the following:

1. An organ responsible for the reflex actions of the body. (.....)
2. A tool used to measure the temperature of human body. (.....)
3. A flame used in cutting and welding metals. (.....)
4. The measurement unit of mass which is almost equal to the mass of one liter of distilled water. (.....)

B) Give a reason for each of the following:

1. Ozone gas is very important in nature.

.....

2. Cerebellum has great importance during the movement of a body.

.....

4 A) What happens when ...?

1. The percentage of carbon dioxide increases in the atmosphere.

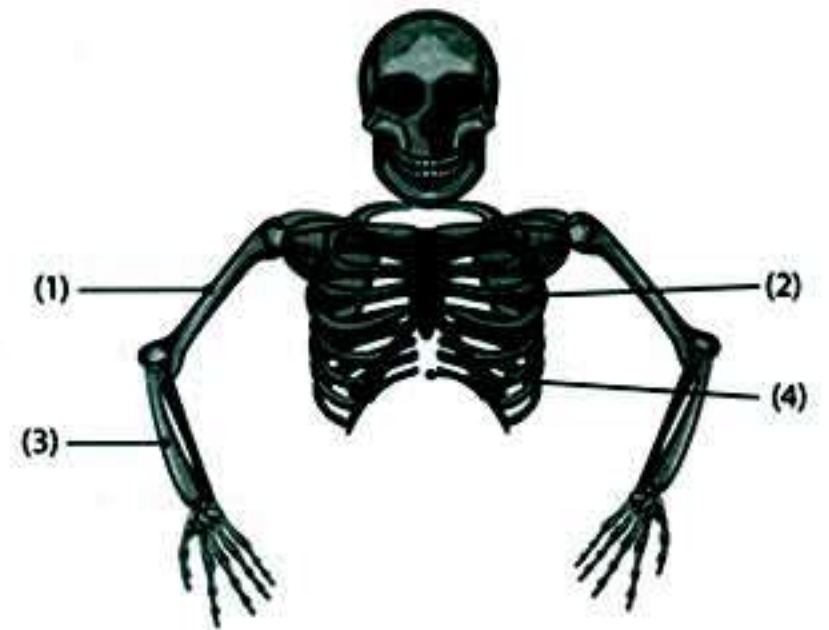
.....

2. The knee joint becomes from the freely movable joints.

.....

B) Look at the opposite figure, then label it:

1.
2.
3.
4.



Ongoing Assessment & Exams

Model 5

1 Complete the following sentences:

- The main center of control in your body is and it is found inside a bony case called
- Oxygen is prepared from in the presence of
- The number of vertebrae of the vertebral column is
- The mass of a body is measured by
- When the distance between an object and the earth's center increases, its weight

2 Choose the correct answer:

- The catalyst that is used in the preparation of oxygen gas in the laboratory is
 - sodium carbonate
 - copper oxide
 - manganese dioxide
 - CO₂
- Newton is equal to the weight of a body, its mass is
 - 10 gm
 - 100 gm
 - 1000 gm
 - 10000 gm
- Which of the following gases can be prepared by adding dilute hydrochloric acid to calcium carbonate powder?
 - Nitrogen.
 - Oxygen.
 - Hydrogen.
 - Carbon dioxide.
- The percentage of oxygen gas in the atmosphere equals
 - 87%
 - 12%
 - 30%
 - 21%
- The device that is used for measuring weight is
 - two-arm scale
 - digital scale
 - spring scale
 - one-arm scale

3 Put (✓) or (X) and correct the false ones:

1. Copper is the best heat conductor. ()
2. Oxygen gas occupies 0.03% of the atmospheric air components. ()
3. The skull has immovable joints. ()
4. A white substance is formed when oxygen reacts with a lighted magnesium ribbon. ()
5. Cartilages prevent friction between the bones of vertebrae. ()
6. The outer surface of the hemisphere is called the cerebral cortex and it is white matter. ()

4 A) Join from column (A) with what is suitable in column (B):

(A)	(B)
1. The backbone	a. knee.
2. The rib cage	b. shoulder.
3. Oxygen gas	c. consists of 33 vertebrae.
4. Nitrogen gas	d. hydrogen peroxide is used in its preparation.
5. Slightly movable joint	e. protects the brain.
6. Freely movable joint	f. consists of 12 pairs of ribs.
	g. represents 78% of the volume of atmospheric air.

1. 2. 3. 4. 5. 6.

B) What happens when ...? (Give reasons if it's possible).

1. You touch a plant with sharp thorns.

.....

2. Carbon dioxide passes on clear limewater.

.....

Ongoing Assessment & Exams

Final Exams on the First Term

2019/2020

(Answer Guide P. 42)

1 Cairo - Zeitoun Educational Directorate

1 A) Complete the following sentences:

1. Weight is measured in which equals the weight of an object whose mass is
2. Mercury remains liquid between which gives a wide range of temperature measurement.
3. is rapid combination with oxygen, but is slow combination in the presence of moisture.
4. gas turns the clear limewater turbid due to the forming of which doesn't dissolved in water.

B) An object whose mass on earth is 6 kg. Calculate its weight on both surfaces of the earth and the moon.

.....

2 A) Choose the correct answer:

1. The number of cranial nerves is (31 – 21 – 24)
2. Skull's joints are (immovable – slightly movable – freely movable)
3. Nitrogen forms an important part in (protein – carbohydrate – fats – water)
4. is the fastest element in heat conduction. (Iron – Aluminum – Copper)

B) What happens when ...?

1. You suddenly touch a hot object.

2. We add yeast to the dough on making bread.

3 A) Write the scientific term for each of the following statements:

1. It consists of a gray matter in the form of letter (H) surrounded by the white matter. (.....)
2. The axis of the skeleton in the human body. (.....)
3. It is the degree of hotness or coldness of a body. (.....)

B) Give a reason for each of the following:

1. The environment suffers from an increasing in the ratio of carbon dioxide gas in recent years.

.....

2. There are gaps between railway bars.

.....

3. Damage of the medulla oblongata causes death.

.....

4 A) Look at the opposite figure, then answer:

1. Write what each label represents in the figure:

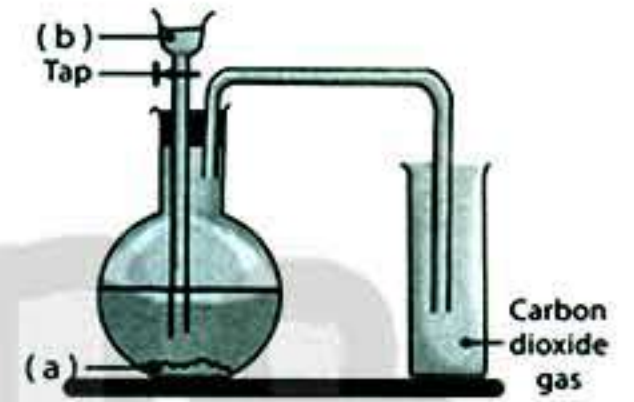
- Substance (a) is

- Liquid (b) is

2. Mention the uses of carbon dioxide gas:

1.

2.

**B) Put (✓) or (X) and correct the false ones:**

1. The nodular bacteria fix oxygen of air in the roots of leguminous plants such as beans and clover. ()
2. The skeleton of the lower limb consists of humerus bones, 2 forearm bones and bones of the hand. ()
3. Oxygen gas is produced when hydrogen peroxide dissociates in the presence of carbon dioxide gas. ()
4. The mass of an object depends on the distance from the center of the planet and the planet where the object exists. ()

Ongoing Assessment & Exams

2 Cairo - St. Joseph's School

1 A) Complete the following sentences:

- gas does not help in burning and is abundant in atmosphere.
- Mercury is used in thermometer because it expands
- The two halves of the cerebral hemispheres are attached together by fibers.
- The human system consists of axial and appendicular skeletons.
- When the distance between an object and the earth's center increases, its weight
- The number of ribs in the rib cage and the number of cranial nerves emerged from the brain is pairs.

B) What is meant by?

- Wood is a heat insulator.
.....
- The human locomotory system.
.....
- Dendrites.
.....

2 A) Put (✓) or (X) and correct the false ones:

- The mass of manganese dioxide increases after preparation of oxygen. ()
- During germination of some seeds, they perform photosynthesis process. ()
- Shaft bone is a part of lower limbs. ()
- The cerebral cortex is the outer part of cerebellum. ()
- Acetylene gas combines with oxygen causing rusting of metals. ()
- Nitrogen contributes in the composition of all living tissues. ()

B) Give a reason for each of the following:

- Legumes plants do not need fertilizers.
.....
- Carbon dioxide gas is not collected by displacement of water.
.....
- Shoulder joint is a freely movable joint.
.....

3 A) Choose the correct answer:

1. If the weight of a rocket on the earth's surface is 50 N, then its weight in the space is N. (less than 50 – more than 50 – zero)
2. To get liquid carbon dioxide from carbon dioxide gas, we use (pressure – cooling – both of them)
3. If an object's mass on the earth is 6000 g, then its weight on the moon = (60 N – 60000 N – 10 N)
4. Heartbeat is an involuntary process under control of (spinal cord – medulla oblongata – both of them)
5. Painting iron to prevent iron rust, by preventing from iron. (oxygen – water vapor – both of them)
6. We cannot live without (oxygen – carbon dioxide – both of them)

B) What happens when ...? (Give reasons if it's possible.)

1. One of the peripheral nervous system is damaged.
.....
2. You touch a plant with sharp thorns.
.....
3. Carbon dioxide passes on clear limewater.
.....

4 A) Write the scientific term for each of the following statements:

1. The process that increases oxygen percentage in air and decreases carbon dioxide percentage. (.....)
2. The material that is added to dough to produce carbon dioxide. (.....)
3. They are substances that affect sleeping periods and heartbeats. (.....)
4. Natural phenomenon (process) that causes the reaction of oxygen with nitrogen in air forming nitrogen oxide. (.....)
5. The materials as wood, tobacco and gasoline which burn and produce carbon dioxide. (.....)
6. The form of energy that transfers from hot objects to cold objects. (.....)

B) When do we say ...?

1. There is damage in cerebellum.
.....
2. Temperature of the earth's surface increases (global warming).
.....
3. The objects on the earth have no weight.
.....

Ongoing Assessment & Exams

3 Cairo - Al-Khalifa & Al-Moqattam Zone - Virginia International School

1 A) Correct the underlined words:

1. Newto is the amount of matter in an object. (.....)
2. Human rib cage is composed of 31 pair of ribs. (.....)
3. As the mass of a planet increases, its gravitational force decreases (.....)
4. The part which is responsible for keeping the balance of the human body is spinal cord (.....)
5. Carbon dioxide gas is collected by downward displacement of water (.....)
6. Medical thermomet is used to measure the temperature of water. (.....)

B) What happens when...?

1. Dilute hydrochloric acid is dropped over calcium carbonate.
.....
2. There is no constriction above the mercury bulb in the medical thermometer.
.....
3. A wet iron nail is exposed for many days to humid air.
.....

2 A) Choose the correct answer:

1. A substance which is a bad conductor of heat is
 a.air b.iron c.copper
2. Oxygen gas
 a.doesn't burn and doesn't help in burning
 b.burns and helps in burning
 c.doesn't burn but helps in burning
3. The melting point of ice is °C.
 a.100 b.zero c.37
4. The joint is the location of meeting of
 a.two bones b.a muscle with a bone c.two muscles
5. Ozone molecule consists of atoms linked together.
 a.3 oxygen b.3 hydrogen c.2 oxygen
6. nearly equals the mass of one paper clip.
 a.Gram b.Kilogram c.Ton

B) Give a reason for the following:

1. Damage of medulla oblongata leads to death.

.....

2. Yeast is added to dough during making bread.

.....

3. Oxygen is collected by downward displacement of water.

.....

3**A) Look at the opposite figure, then answer:**

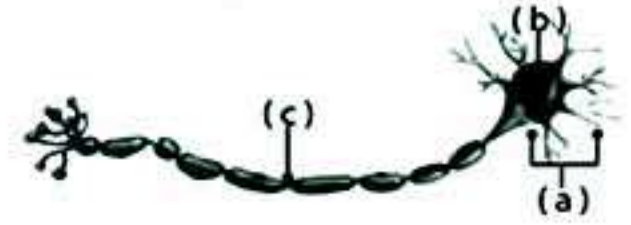
1. This is cell.

2. Write the labels:

(a)

(b)

(c)

**B) If the weight of a person is 600 Newton on the earth's surface, calculate:**

1. His/her mass on the earth.

.....

2. His/her weight on the moon.

.....

C) Classify each of the following joints according to their types:

1. Skull joints:

2. Wrist joints:

4**A) Compare between:**

Points of comparison	Nitrogen gas	Oxygen gas	Carbon dioxide gas
1. Percentage in air
2. Its symbol

B) Mention one use for each of the following:

1. Skull.

.....

2. Spinal cord.

.....

3. Oxyacetylene flame.

.....

B) Compare between: Celsius and medical thermometers

Points of comparison	Celsius thermometer	Medical thermometer
Usage
Scale range

4 A) Correct the underlined words:

1. Medulla oblongata control the voluntary movements as walking. (.....)
2. The number of cranial nerves is 31 pairs of nerves. (.....)
3. The elbow joint is one of the immovable joints. (.....)

B) What happens if...?

- You blow in a jar that contains clear limewater.
-

C) Look at the opposite figure, then answer the following questions:

1. This figure represents the structure of
2. Its location in the human body is
3. Label the figure:
 - (1)
 - (2)



Ongoing Assessment & Exams

5 Giza - Giza Science Inspectorate

1 A) Choose the correct answer:

1. By increasing the distance between an object and the earth's surface, the weight of this object (decreases – increases – is not affected – nothing happens)
2. Newton equals the weight of an object whose mass is grams. (0.1 – 10 – 100 – 1000)
3. is good conductor of heat. (Wood – Copper – Glass – Air)
4. Carbon dioxide is produced when dilute hydrochloric acid is added to the (calcium carbonate – calcium oxide – calcium hydroxide – calcium chloride)
5. Nitrogen represents of the earth's atmosphere. (87% – 21% – 0.03% – 78%)
6. The part of the nervous system which is responsible for reflex action is (cerebrum – spinal cord – medulla oblongata – cerebellum)
7. The rib cage of man consists of pairs of ribs. (10 – 11 – 12 – 21)

B) Correct the underlined words:

1. Weight is the amount of matter in an object.
2. There is a constriction in Celsius thermometer.

C) If an object's mass = 20 Kg on earth's surface. Calculate:

1. Its mass on the moon's surface.
2. Its weight on the earth's surface.
3. Its weight on moon's surface.

2 A) Complete the following sentences:

1. The mass can be measured by and the weight can be measured by
2. The scale of medical thermometer starts from °C to °C.
3. Oxygen is produced from process and carbon dioxide is produced from process.
4. The number of cranial nerves is pairs and the number of spinal nerves is pairs.

B) What would happen in the following cases?

1. Carbon dioxide gas passes through clear limewater.

.....

2. The medical thermometer is placed in a cup of boiled water.

.....

3 A) Write the scientific term for each of the following statements:

1. The measuring unit of weight.

(.....)

2. The gas that is used in making dry ice.

(.....)

3. A device used to measure the temperature of the human body.

(.....)

4. The building unit of nervous system.

(.....)

B) 1. Look at the opposite figure, then answer:

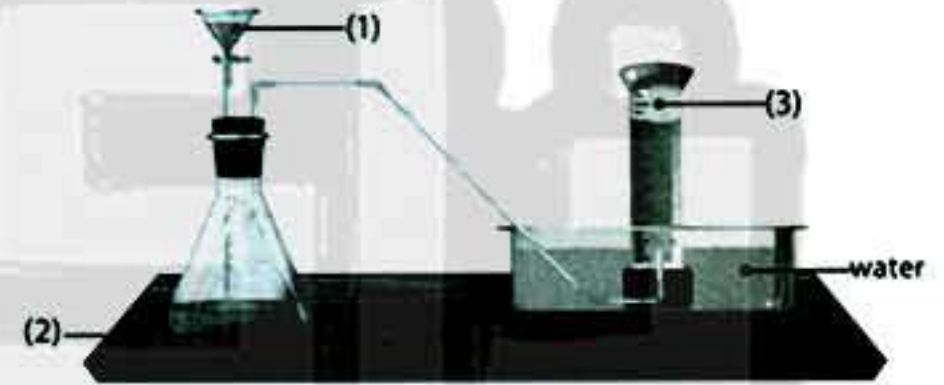
The opposite apparatus is used in the preparation of

2. Label the figure:

1.

2.

3.

**4 A) Give a reason for each of the following:**

1. Mercury is used in thermometer.

.....

2. Oxygen is collected by downward displacement of water.

.....

3. Carbon dioxide gas is used in extinguishing fires.

.....

4. Brain is located inside the skull.

.....

B) Mention one use for each of the following:

1. Oxyacetylene flame.

.....

2. Cerebellum.

.....

Ongoing Assessment & Exams

6 Giza - Giza Educational Administration

1 Complete the following:

1. The scale of the medical thermometer starts from and ends at
2. The measurement unit of mass is, whereas the measurement unit of weight is
3. Oxygen is produced from process and carbon dioxide is produced from process.
4. The number of cranial nerves is and the number of spinal nerves is
5. Liquids by heating and by cooling.
6. Oxygen gas is prepared in laboratory from in the presence of

2 A) Put (✓) or (X) and correct the false ones:

1. The spinal cord is responsible for the reflexes. ()
2. Heat transfers from the cold object to the hot object. ()
3. Nitrogen gas occupies 78% of the atmospheric air. ()
4. Aluminum is a bad conductor of heat. ()
5. CO₂ is heavier than air so it replaces air. ()
6. The mass of a body changes by changing the place. ()

B) Give a reason for each of the following:

1. Carbon dioxide gas is used in extinguishing some fires.

.....

2. Handles of cooking utensils are made of wood or plastic.

.....

3. Ozone gas is very important in nature.

.....

3 A) Write the scientific term for each of the following statements:

1. The amount of matter in an object. (.....)
2. A bony box that contains cavities for eyes ears and nose. (.....)
3. The building unit of the nervous system. (.....)
4. Location at which bones meet each other. (.....)
5. Automatic body response towards different stimuli. (.....)
6. The degree of hotness or coldness of a body. (.....)

B) If an object's mass = 12 Kg on earth. Calculate:

1. Its mass on the moon.
.....
2. Its weight on earth.
.....
3. Its weight on the moon.
.....

4 A) Choose the correct answer:

1. The gray matter in the spinal cord its shape is like the letter.
a. A b. H c. F d. D
2. Nitrogen molecule consists of nitrogen atoms.
a. three b. four c. one d. two
3. The rib cage in man consists of pairs of ribs.
a. 11 b. 10 c. 12 d. 33
4. The best metal in conducting heat is
a. aluminum b. copper c. iron d. gold

B) Mention one importance for:

1. Spring scale.
.....
2. Oxyacetylene flame.
.....

Ongoing Assessment & Exams

7 Alexandria - Middle Zone - Science Inspectorate

1 Complete the following sentences:

- Oxygen is prepared by the decomposition of in the presence of
- When the mass of a planet increases, its increases and the of the object increases.
- Heat transfers from body to body.
- The locomotory system consists of system and system.
- Carbon dioxide gas is than the air and it is collected by displacement of air.
- The cell body of nerve cell contains and

2 A) Write the scientific term for each of the following statements:

- The measuring unit of mass that equals the mass of one liter of distilled water. (.....)
- The flame that is used in welding metals. (.....)
- Materials that let heat to flow through. (.....)
- The main control center of the body. (.....)

B) Mention one importance for each of the following:

- Medulla oblongata.
.....
- Medical thermometer.
.....

3 A) Choose the correct answer:

- All the following are from the components of the central nervous system except
a. spinal cord b. cerebral hemisphere
c. cerebrum d. cranial nerves
- From the immovable joints are joint.
a. wrist b. skull c. hip d. knee
- When a lighted magnesium ribbon is inserted in a tube containing carbon dioxide gas element deposits on the walls of the tube.
a. magnesium b. magnesium oxide c. carbon d. calcium
- If the mass of an object on earth is 6 kg, then its mass on the moon equals
a. 1 Kg b. 60 Kg c. 6 N d. 6 Kg
- Ozone gas consists of atom(s).
a. one b. two c. three d. four
- Newton equals the weight of a body whose mass is gram(s).
a. one b. 10 c. 100 d. 1000

B) Give a reason for each of the following:

1. Oxygen is collected by downward displacement of water.

.....

2. Cooking pots are made of aluminum.

.....

3. Withdrawal of hand quickly when it touches the thorns of a plant.

.....

4 A) Cross the odd word out:

1. cerebrum - spinal cord - cerebellum - medulla oblongata.
2. oxygen - nitrogen - ammonia - carbon dioxide.
3. kilogram - ton - Newton - gram.

B) Correct the underlined words:

1. Weight is constant doesn't change by changing place.
2. Oxygen is called azote that means lifeless.

C) Study the opposite figure, then answer the questions:

1. Label the figure:

1.
2.
3.



2. This gas is used in and

Ongoing Assessment & Exams

8 Qalubia - Qalubia Educational Administration

1 A) Complete the following sentences:

1. and are good conductors of heat.
2. Mass is constant and it is not affected by

B) Write 2 properties only for N₂ gas:

1.
2.

C) Compare between: Celsius thermometer and medical thermometer.

Points of comparison	Celsius thermometer	Medical thermometer
1. Range of scale
2. Usage

2 A) Put (✓) or (X) and correct the false ones:

1. Axon of the neuron is ended by axon terminals. ()
2. Cartilages link bones with each other. ()

B) What happens when? And why?

1. Cerebellum is shocked hardly
Because
2. Putting of medical thermometer in boiling water
Because

C) Mention one importance of:

1. Medulla oblongata.
2. Constriction of medical thermometer.
3. Ozone layer.
4. Dry ice.

3 A) Choose the correct answer:

1. A body of weight 40 Newton on earth, its mass is equal to (40 – 400 – 4 – 4000) Kg.
2. Turbid limewater is calcium (carbonate – hydroxide – oxide – metal)
3. Gray matter takes the shape of the letter (G – U – H – S)
4. Myelin sheath surrounds (nerve cell axon – cerebellum – medulla oblongata)

B) If an object's mass on earth= 60 Kg, calculate:

1. Its mass on moon.
2. Its weight on earth.
3. Its weight on the moon.

C) Determine the type of the following joints:

1. Skull joints.
2. Knee joint.

4 A) Write the scientific term for each of the following:

1. The unit of an object's weight which equals the mass of 100 gm. (.....)
2. It is the degree of hotness or coldness of a body. (.....)
3. The catalyst which is used to prepare O_2 gas in the lab. (.....)
4. The spontaneous response of the body to different stimuli. (.....)

B) Give a reason for each of the following:

a. The importance of measuring temperature (2 reasons only).

1.
2.

b. The atmosphere is important (2 reasons only).

1.
2.

C) Label the diagram:

1.
2.
3.
4.



Ongoing Assessment & Exams

9 Gharbia - Department of Language Schools Supervision

1 A) Complete the following sentences:

- is measured in kilogram.
- Copper conducts heat than iron.
- resulted from burning of organic substances.
- Nitrogen oxides are formed in the atmosphere during
- Myelin sheath surrounds the
- is the main control center in your body.

B) If an object's mass = 30 Kg on earth, calculate:

- Its mass on the moon's surface.
.....
- Its weight on the earth.
.....
- Its weight on the moon.
.....

2 A) Choose the correct answer:

- The device of measuring weight is
a. measuring tape b. balance scale c. spring scale
- The medical thermometer is used in measuring the temperature of
a. the human body b. liquids c. gases
- gas is used to make soft drinks.
a. Carbon dioxide b. Oxygen c. Nitrogen
- is located in front of the cerebellum.
a. Cerebrum b. Cerebellum c. Medulla oblongata
- The number of spinal nerves is pairs of nerves.
a. 31 b. 21 c. 12
- The elbow joint is from the
a. immovable joints b. slightly movable joints c. freely movable joints

B) What happens when...?

- Blowing in limewater for two minutes by using straw.
.....
- You suddenly touch a hot object.
.....

3 A) Write the scientific term for each of the following statements:

1. It is almost equal to the weight of an object whose mass is 100 grams. (.....)
2. Materials that let heat flow through. (.....)
3. The chemical substance that remains without any change in its quantity and properties during the chemical reaction. (.....)
4. The gas that is used in mechanical ventilation for patients who suffer from breathing difficulties. (.....)
5. The building unit of the nervous system. (.....)
6. The structure which consists of the bones of upper and lower limbs. (.....)

B) Give a reason for each of the following:

1. There is a constriction above the bulb of the medical thermometer.
.....
2. It is important not to take sleeping pills without the doctor's prescription.
.....

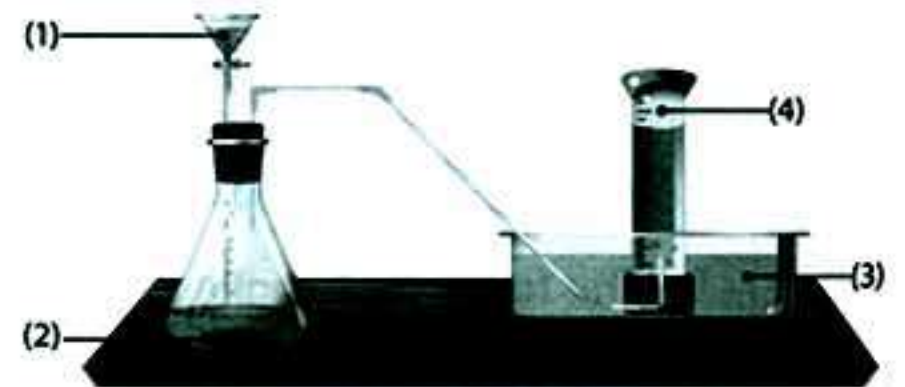
4 A) Put (✓) or (X) and correct the false ones:

1. Aluminum is a bad conductor of heat. ()
2. Plastic and wood are used to make handles of cooking pots. ()
3. Carbon dioxide gas is prepared from hydrogen peroxide which dissociates in the presence of manganese dioxide. ()
4. Legumes such as clover benefit from the nitrogen in air. ()
5. Cerebellum lies at the back area of the brain below the two hemispheres. ()
6. The rib cage consists of 33 pairs of ribs. ()

B) Look at the opposite figure, then answer the questions:

1. This apparatus is used for the preparation of
2. Write what each label represents on the figure:

1.
2.
3.
4.



Ongoing Assessment & Exams

10 Kafr Al-Sheikh - Science Inspectorate

1 A) Choose the correct answer:

1. Mass is measured in (Newton – gram – meter)
2. (Carbon dioxide – Oxygen – Nitrogen) represents 78% of the earth's atmosphere.
3. (Cerebellum – Medulla oblongata – Spinal cord) maintains the balance of the body during movement.
4. The backbone consists of (35 – 33 – 31) vertebrae with cartilages between them.

B) Look at the opposite figure:



1. What is the name of this device?
.....
.....
2. What is the measuring unit indicated left to the pointer?
.....
.....

2 A) Choose from column (B) what suits in column (A):

(A)	(B)
1. Oxygen doesn't burn	a) indicates the presence of carbon dioxide.
2. Turbidity of limewater	b) but it helps in burning.
3. Ankle in foot	c) are the main source of oxygen in the air.
4. Green plants	d) is a freely movable joint.

1. 2. 3. 4.

B) Write the scientific term for each of the following statements:

1. The force that makes objects fall down towards the earth. (.....)
2. The form of energy that transfers from a higher temperature object to the a lower one. (.....)

3 A) Give a reason for each of the following:

1. Heavy blankets and wool clothes are used in winter to cover our bodies.

.....

2. There is a constriction above the bulb of the medical thermometer.

.....

B) Correct the underlined words:

1. Sensitive two arm balance is used to measure the mass of fruits.
 2. Cerebrum is responsible for the reflex action.
 3. The medical thermometer scale starts from zero to 100 degrees.
 4. Nitrogen is emitted as a result of combustion of organic materials.

4 A) Put (✓) or (X) and correct the false ones:

1. Plastic and paper are good conductors of heat. ()
 2. Mercury is preferred in making thermometers. ()
 3. Iron becomes heavier in mass when its surface rust. ()
 4. The mass of an object in space is greater than its mass on the earth. ()

B) Complete the following statements:

1. conducts heat faster than aluminum and iron.
 2. adjusts the temperature of the earth's surface.

Ongoing Assessment & Exams

11 Beheira - Official Schools Administration

1 A) Complete the following sentences:

1. The weight of an object can be measured by scale, while is used in measuring the temperature of the boiled water.
2. gas is converted into dry ice that is used in
3. is used to prepare oxygen gas and it is called catalyst.
4. gas is called azote.
5. The number of spinal nerves is pairs of nerves.
6. If the mass of an object on the moon's surface equals 10 kg, then its mass on the earth's surface equals Kg.

B) An object has a mass of 6 kg, calculate the weight of the object:

1. On the surface of the earth.
.....
2. On the surface of the moon.
.....

2 A) Choose the correct answer:

1. A fatty layer covers the
a. axon b. skull c. the spinal cord d. lung
2. nearly equals the mass of one paper clip.
a. Gram b. Kilogram c. Newton d. Meter
3. The gas which turns limewater turbid is gas.
a. oxygen b. nitrogen c. carbon dioxide d. ozone
4. Copper conducts heat aluminum.
a. faster than b. slower than
c. similar d. no correct answer
5. Knee joints are joints.
a. immovable b. freely movable c. slightly movable d. constant

B) Give a reason for each of the following:

1. There is a constriction in the medical thermometer.
.....
2. Ozone gas is very important in nature.
.....

3 A) Write the scientific term for each of the following statements:

1. The materials that allow heat to flow through. (.....)
2. The gas whose molecule is composed of three oxygen atoms. (.....)
3. The flame that is used in cutting and welding metals. (.....)
4. The basic structural unit of the nervous system. (.....)

B) Mention one use of the following:

1. Rib cage.

.....

.....

2. Skull.

.....

.....

4 A) Correct the underlined words:

1. Air is a good conductor of heat.
2. Medulla oblongata maintains the balance of the body during the movement.
3. Oxygen gas is formed in the atmosphere during lightning.
4. The centers of thinking and memory exist in the spinal cord.

B) What will happen if...?

1. We put a burning ribbon of magnesium in a cylinder filled with CO_2 .

.....

.....

2. There is no oxygen in the atmosphere.

.....

.....

Model Answers

Al Adwaa MCQ Model Exams

P. 82

Model 1

- | | | | |
|---------|---------|---------|---------|
| 1. (a) | 2. (a) | 3. (b) | 4. (c) |
| 5. (c) | 6. (c) | 7. (a) | 8. (c) |
| 9. (b) | 10. (b) | 11. (b) | 12. (d) |
| 13. (a) | 14. (a) | 15. (b) | 16. (d) |
| 17. (a) | 18. (b) | 19. (c) | 20. (b) |

Model 2

- | | | | |
|---------|---------|---------|---------|
| 1. (d) | 2. (c) | 3. (d) | 4. (c) |
| 5. (a) | 6. (b) | 7. (a) | 8. (a) |
| 9. (b) | 10. (d) | 11. (c) | 12. (a) |
| 13. (b) | 14. (a) | 15. (c) | 16. (a) |
| 17. (a) | 18. (a) | 19. (b) | 20. (c) |

Model 3

- | | | | |
|---------|---------|---------|---------|
| 1. (b) | 2. (c) | 3. (b) | 4. (b) |
| 5. (c) | 6. (c) | 7. (c) | 8. (d) |
| 9. (a) | 10. (a) | 11. (d) | 12. (d) |
| 13. (b) | 14. (c) | 15. (c) | 16. (c) |
| 17. (d) | 18. (c) | 19. (d) | 20. (b) |

Model 4

- | | | | |
|---------|---------|---------|---------|
| 1. (c) | 2. (a) | 3. (c) | 4. (a) |
| 5. (b) | 6. (b) | 7. (c) | 8. (c) |
| 9. (b) | 10. (d) | 11. (b) | 12. (b) |
| 13. (b) | 14. (d) | 15. (a) | 16. (d) |
| 17. (d) | 18. (c) | 19. (a) | 20. (b) |

Model 5

- | | | | |
|---------|---------|---------|---------|
| 1. (b) | 2. (b) | 3. (d) | 4. (b) |
| 5. (d) | 6. (d) | 7. (d) | 8. (b) |
| 9. (a) | 10. (a) | 11. (c) | 12. (b) |
| 13. (b) | 14. (c) | 15. (c) | 16. (a) |
| 17. (a) | 18. (d) | 19. (b) | 20. (b) |

MCQ Governorates Exams
(2020 - 2021)

P. 92

1 Cairo - El-Zeitoun Educational Directorate

- | | | | |
|--------|--------|--------|--------|
| 1. (b) | 2. (b) | 3. (a) | 4. (c) |
|--------|--------|--------|--------|

2 Cairo - Al-Sahel Directorate

- | | | | |
|--------|--------|--------|--------|
| 1. (c) | 2. (c) | 3. (a) | 4. (a) |
|--------|--------|--------|--------|

3 Cairo - Al-Basateen & Dar El-Salam Edu. Directorate

- | | | | |
|--------|--------|--------|--------|
| 1. (d) | 2. (c) | 3. (b) | 4. (a) |
|--------|--------|--------|--------|

4 Giza - Al-Sheikh Zayed Educational Directorate

- | | | | |
|--------|--------|--------|--------|
| 1. (d) | 2. (c) | 3. (a) | 4. (d) |
|--------|--------|--------|--------|

5 Giza-EL-Agouza Educational Directorate

- | | | | |
|--------|--------|--------|--------|
| 1. (a) | 2. (d) | 3. (d) | 4. (c) |
|--------|--------|--------|--------|

6 Giza - Bolaq El-Dakroul Educational Directorate

- | | | | |
|--------|--------|--------|--------|
| 1. (b) | 2. (a) | 3. (c) | 4. (b) |
|--------|--------|--------|--------|

7 Aswan - Aswan Educational Directorate

- | | | | |
|--------|--------|--------|--------|
| 1. (c) | 2. (a) | 3. (d) | 4. (d) |
|--------|--------|--------|--------|

8 Sharkia - West Zagazig Educational Directorate

- | | | | |
|--------|--------|--------|--------|
| 1. (b) | 2. (d) | 3. (c) | 4. (a) |
|--------|--------|--------|--------|

9 Menofia - Berket ElSabaa Educational Directorate

- | | | | |
|--------|--------|--------|--------|
| 1. (c) | 2. (b) | 3. (c) | 4. (b) |
|--------|--------|--------|--------|

10 Suez - South Educational Directorate

- | | | | |
|--------|--------|--------|--------|
| 1. (c) | 2. (b) | 3. (b) | 4. (b) |
|--------|--------|--------|--------|

11 Port Said - North Educational Directorate

- | | | | |
|--------|--------|--------|--------|
| 1. (c) | 2. (b) | 3. (b) | 4. (c) |
|--------|--------|--------|--------|

12 Luxor - Al Qarna Educational Directorate

- | | | | |
|--------|--------|--------|--------|
| 1. (a) | 2. (a) | 3. (b) | 4. (b) |
|--------|--------|--------|--------|

Model Answers

Combined Model Exams

(Selected from 2019/2020 Governorates Exams)

P. 96

Model 1

- 1 1. sensitive balance, spring scale
2. upper - lower
3. 35 - 42
4. carbon dioxide gas, oxygen
5. 12 - 31

- 2 1. mercury
2. carbon dioxide
3. spinal cord
4. medulla oblongata
5. manganese dioxide

- 3 A) 1. (✓)
2. (X) 21%
3. (✓)

- B) Mass on the moon = 6 kg ,
Weight on the Earth = $6 \times 10 = 60 \text{ N}$,
Weight on the moon = $\frac{60}{6} = 10 \text{ N}$

- 4 A) 1. Nitrogen gas
2. Ozone gas 3. kg
B) 1. Because, they are heat insulators.
2. Because it doesn't dissolve in water.

Model 2

- 1 1. medical
2. 12 pairs, 31 pairs
3. spring scale -balance scale
4. CO_2 , O_2 5. temperature.

- 2 1. copper
2. 78
3. immovable
4. cerebrum
5. protein

- 3 A) 1. Atmosphere
2. Neuron
3. Mercury
4. Oxyacetylene

- B) 1. It is responsible for reflex action.
2. It measures the temperature of liquids.

- 4 A) 1. (✓)
2. (X) one carbon atom combined with two oxygen atoms.
3. (X) cerebrum
B) Mass on the moon = 5 kg
Weight on the Earth = $5 \times 10 = 50 \text{ N}$

Model 3

- 1 1. balance scale – spring scale.
2. colorless
3. $\text{CO}_2 - \text{O}_2$
4. CO_2 – calcium carbonate
5. skeletal

- 2 1. (C) 2. (b) 3. (a) 4. (c) 5. (c)

- 3 A) 1. (X) steel
2. (X) lifeless
3. (✓)
4. (✓)

- B) 1. To prevent returning back of mercury to the mercury bulb quickly.
2. To protect them.

- 4 A) 1. Newton 2. CO_2 3. Brain
B) 1. $0^\circ\text{C} - 100^\circ\text{C}$ 2. 78
3. 3500 4. cartilage

Model Answers

Model 4

- 1 1. 35 – 42 2. cell body – axon
3. slightly movable – freely movable
4. kg – N
5. hydrogen peroxide – manganese dioxide

- 2 1. mercury
2. CO₂
3. spinal cord
4. cerebellum
5. manganese dioxide

- 3 A) 1. Spinal cord
2. Medical thermometer
3. Oxyacetylene 4. Kg
B) 1. Because it protects the earth from harmful rays.
2. Because it maintains the body balance.

- 4 A) 1. Increasing the temperature of the earth
2. It will move in all directions
B) 1. humerus bone 2. ribcage
3. forearm bone 4. ribs

Model 5

- 1 1. brain – skull
2. hydrogen-peroxide -manganese dioxide
3. 33
4. balance scale
5. decreases

- 2 1. (c) 2. (b) 3. (d) 4. (d) 5. (c)

- 3 1. (✓) 2. (X) 21%
3. (✓) 4. (✓)
5. (✓) 6. (X) gray

- 4 A) 1. (c) 2. (f) 3. (d)
4. (g) 5.(a) 6. (b)
B) 1. I move my hand away quickly.
2. The limewater becomes turbid.

Final Exams

on the First Term

2019-2020

P. 106

1 Cairo - Zeitoun Educational Directorate

- 1 A) 1. Newton, 100 grams.
2. -39°C - 357°C.
3. combustion, oxidation.
4. carbon dioxide (CO₂), calcium carbonate.

$$B) W_{\text{Earth}} = \text{mass} \times 10 \\ = 6 \times 10 = 60 \text{ N}$$

$$W_{\text{moon}} = W_{\text{Earth}} \div 6 \\ = 60 \div 10 = 10 \text{ N}$$

- 2 A) 1. 24. 2. immovable.
3. Protein 4. copper
B) 1. Withdrawal of the hand quickly due to the reflex action.
2. Carbon dioxide gas is produced and expands by heat making the bread porous and tasty.
- 3 A) 1. spinal cord 2. backbone
3. temperature
B) 1. Due to the removal of forests, and the combustion of massive amount of fuels in factories and means of transportation.
2. To avoid accidents, as iron is a good conductor of heat which expands and twists by heat.
3. Because it regulates the involuntary processes, and any damage will affect the heartbeats, breathing, etc. which will lead to death.

- 4 A) 1. - Substance (a) is calcium carbonate
- Substance (b) is dilute hydrochloric acid
2. (a) soft drinks
(b) fire extinguishers
B) 1. (X) nitrogen
2. (X) upper
3. (X) manganese dioxide
4. (X) weight

Model Answers

2 Cairo - St. Joseph's School

- 1 A) 1. nitrogen
2. regularly
3. nerve
4. skeletal
5. decreases 6. 12.
- B) 1. It doesn't allow heat to pass through.
2. It is the system which is responsible for the body movement.
3. They are the branches extending from the cell body of neuron to connect the neighboring neurons forming synapses.

- 2 A) 1. (X) the mass does not change
2. (X) respiration 3. (✓)
4. (X) cerebrum
5. (X) cutting and welding of metals
6. (✓)

- B) 1. Because it's special type of bacteria (nodular) that live in their roots absorb nitrogen gas to build proteins.
2. Because carbon dioxide gas easily dissolves in water.
3. Because it allows movement in all directions.

- 3 A) 1. zero
2. both of them
3. 10 N
4. medulla oblongata
5. both of them
6. both of them
- B) 1. The nerve message will not be delivered from all body parts to the central nervous system.
2. Withdrawal of the hand quickly due to the reflex action.
3. It turns into milky, due to the formation of calcium carbonate which is a white insoluble substance.

- 4 A) 1. Photosynthesis
2. Yeast
3. Stimulants
4. Lightning
5. Organic materials
6. Heat

- B) 1. When the body loses its balance during movement.
2. When the percentage of CO₂ increases in the air.
3. When there is no gravity on earth.

3 Cairo - Al-Khalifa & Al-Moqattam Zone - Virginia International School

- 1 A) 1. mass
2. 12 pairs
3. increases
4. cerebellum
5. upward - air
6. Celsius thermometer

- B) 1. Carbon dioxide gas is produced.
2. Mercury will return back to the bulb quickly.
3. It will rust (oxidation process).

- 2 A) 1. (a)
2. (c)
3. (b)
4. (a)
5. (a)
6. (a)

- B) 1. Because it regulates involuntary processes, and any damage will affect the heartbeats, breathing, etc. which will lead to death.
2. Because, carbon dioxide gas is produced and expands by heat making the bread porous and tasty.
3. Because it scarcely dissolves in water.

- 3 A) 1. nerve 2. a) cell body
b) nucleus
c) Myelin sheath

B) 1. $Mass = \frac{W_{Earth}}{10} = \frac{600}{10}$
 $= 60 \text{ Kg}$

2. $W_{Moon} = W_{Earth} \div 6$
 $= 600 \div 6 = 100 \text{ N}$

- C) 1. Immovable joints
2. Freely movable joints

Model Answers

4 A)

P.O.C	Nitrogen	Oxygen	Carbon dioxide
Percentage in air	78%	21%	0.03%
Its symbol	N ₂	O ₂	CO ₂

- B) 1. Protects the brain.
2. Responsible for reflex action.
3. Cutting and welding metals.

4 Giza - Experimental Educational Directorate

- 1 A) 1. cell body, axon
2. dilute hydrochloric acid, calcium carbonate.
3. balance scale, spring scale.
4. axial skeleton, appendicular skeleton.

- B) 1. Protects the earth from harmful rays coming from the sun.
2. Keeps the body balance during movement.

- 2 A) 1. Catalyst
2. Heat insulators
3. Joints
4. Nitrogen

- B) 1. To protect them from rust and corrosion.
2. Due to reflex action.

- 3 A) 1. (b) 2. (b) 3. (c) 4. (b)

B)

P.O.C	Celsius thermometer	Medical thermometer
Usage	measures temperature of liquids	measures temperature of human body
Scale range	0°C — 100°C	35°C — 42°C

- 4 A) 1. Cerebrum
2. 12
3. slightly movable

B) Clear limewater turns turbid.

- C) 1. spinal cord.
2. Inside the backbone
3. (1) white matter
(2) gray matter

5 Giza - Giza Science Inspectorate

- 1 A) 1. decreases
2. 100
3. copper
4. calcium carbonate
5. 78%
6. spinal cord
7. 12

B) 1. mass 2. medical

- C) 1. Mass on the moon's surface = 20 Kg
2. The weight on the earth's surface =
Mass × 10 = 20 × 10
= 200 N
3. The weight on the moon's surface =
 $W_{\text{Earth}} \div 6 = 200 \div 6$
= 33.3 N

- 2 A) 1. balance scale, spring scale
2. 35, 42
3. photosynthesis, respiration
4. 12,31

B) 1. Clear limewater turns turbid.
2. It will be broken as its scale range ends at 42°C, while the water boils at 100°C.

- 3 A) 1. Newton
2. Carbon dioxide
3. Medical (clinical) thermometer
4. Neuron (nerve cell)
B) 1. oxygen.
2. (1) hydrogen peroxide
(2) manganese dioxide
(3) oxygen gas

Model Answers

4 A) 1. Because it is a liquid material that can be seen easily through the capillary tube, doesn't stick on the walls of the capillary tube and a good conductor of heat which expands regularly as it has a wide range of measuring temperature.

2. Because it scarcely dissolves in water.
3. Because it doesn't help in burning.
4. To be protected.

B) 1. Cutting and welding of metals.
2. Keeps the body balance during movement.

6 Giza - Giza Educational Administration

1 1. 35°C , 42°C
2. kilogram, Newton
3. photosynthesis, respiration
4. 12 pairs, 31 pairs
5. expand, contract
6. hydrogen peroxide - manganese dioxide

2 A) 1. (✓)
2. (X) from hot to cold
3. (✓)
4. (X) good
5. (✓)
6. (X) does not change

B) 1. Because it doesn't help in burning.
2. Because they are heat insulators.
3. Because it protects the earth from harmful rays coming from the sun.

3 A) 1. Mass
2. Skull
3. Neuron (nerve cell)
4. Joints
5. Reflex action
6. Temperature

B) 1. Mass on the moon = 12 kg
2. Weight on earth = mass \times 10 = 12×10
= 120 N
3. Weight on the moon = $W_{\text{Earth}} \div 6 = 120 \div 6$
= 20 N

4 A) 1. (b)
2. (d)
3. (c)
4. (b)

B) 1. Used in measuring the object's weight.
2. Used in cutting and welding of metals.

7 Alexandria - Middle Zone - Science Inspectorate

1 1. hydrogen peroxide, manganese dioxide
2. gravity, weight
3. hot, cold
4. skeletal, muscular
5. heavier, upward
6. nucleus, Cytoplasm

2 A) 1. kilogram
2. oxyacetylene flame
3. heat conductors
4. brain

B) 1. Regulates involuntary processes such as heartbeats.
2. Measures the temperature of human body.

3 A) 1. (d)
2. (b)
3. (c)
4. (d)
5. (c)
6. (c)

B) 1. Because oxygen rarely dissolves in water.
2. Because aluminum is a heat conductor.
3. Due to the reflex action.

4 A) 1. spinal cord
2. ammonia
3. Newton

B) 1. Mass
2. Nitrogen

Model Answers

- C) 1. (1) carbon dioxide gas
(2) dilute hydrochloric acid
(3) calcium carbonate
2. soft drinks, fire extinguishers

8 Qalubia - Qalubia Educational Administration

- 1 A) 1. copper - aluminum
2. changing place
B) 1. Doesn't burn and doesn't help in burning.
2. Scarcely dissolves in water.
C)

P.O.C	Celsius thermometer	Medical thermometer
Range of scale	0°C — 100°C	35°C — 42°C
Usage	Temperature of liquids.	Temperature of the human body.

- 2 A) 1. (✓) 2. (X)
B) 1. The body will lose its balance, because it maintains the balance of the body during movement.
2. The medical thermometer will be damaged because the boiling point of water is 100°C.
C) 1. It's responsible for regulating the involuntary processes of the body as heartbeats.
2. It prevents mercury from returning back to the bulb quickly.
3. It protects the Earth from harmful radiations that come from the Sun.
4. It is used in refrigeration through pressure and cooling processes.

- 3 A) 1. 4
2. carbonate
3. H
4. nerve cell's axon
B) Answer by yourself.
C) 1. immovable joints
2. slightly movable joints

- 4 A) 1. Newton
2. Temperature
3. Manganese dioxide
4. Reflex action
B) a) 1- It helps us to know our bodies temperature.
2- It helps us to know the weather temperature.
b) 1- It protects the earth from harmful radiations.
2- It adjusts the temperature of the earth's surface.
C) Answer by yourself.

9 Gharbia - Department of Language Schools Supervision

- 1 A) 1. mass
2. faster
3. carbon dioxide gas
4. lightning
5. axon
6. brain
B) 1. Mass on moon = 30 kg.
2. Weight on the earth = $W_{\text{Earth}} = \text{mass} \times 10$
 $= 30 \times 10 = 300 \text{ N}$
3. Weight on the moon = $W_{\text{Moon}} = W_{\text{Earth}} \div 6$
 $= 300 \div 6 = 50 \text{ N}$
2 A) 1. (c)
2. (a)
3. (a)
4. (c)
5. (a)
6. (b)
B) 1. Clear limewater will turn turbid.
2. Withdrawal of the hand quickly due to the reflex action.

- 3 A) 1. Newton
2. Heat conductors
3. Catalyst
4. Oxygen
5. Neuron
6. Appendicular skeleton

Model Answers

- B) 1. To prevent mercury from returning back to the bulb quickly.
2. Because they affect sleeping periods and heartbeats and lead to nervous tension.

- 4 A) 1. (X) good
2. (✓)
3. (X) oxygen gas
4. (✓)
5. (✓)
6. (X) 12 pairs

- B) 1. oxygen gas
2. (1) hydrogen peroxide
(2) manganese dioxide
(3) water
(4) oxygen gas

10 Kafr Al-Sheikh - Science Inspectorate

- 1 A) 1. gram
2. nitrogen
3. cerebellum
4. 33

- B) 1. Spring scale.
2. Newton.

- 2 A) 1. b) but it helps in burning
2. a) indicates the presence of carbon dioxide
3. d) is a freely movable joint
4. c) are the main sources of oxygen in the air.

- B) 1. Weight
2. Heat

- 3 A) 1. Because they are heat insulators that prevent the leakage of heat.
2. To prevent mercury from returning back to the bulb quickly.

- B) 1. Double-pan scale
2. Spinal cord
3. Celsius
4. Carbon dioxide gas

- 4 A) 1. (X) bad
2. (✓)
3. (✓)
4. (X) mass does not change

- B) 1. copper
2. atmosphere

11 Beheira - Official Schools Administration

- 1 A) 1. spring, Celsius thermometer
2. carbon dioxide, refrigeration
3. manganese dioxide
4. nitrogen
5. 31
6. 10

$$B) W_{\text{Earth}} = \text{mass} \times 10 \\ = 6 \times 10 = 60 \text{ N} \\ W_{\text{Moon}} = W_{\text{Earth}} \div 6 \\ = 60 \div 6 = 10 \text{ N}$$

- 2 A) 1. (a)
2. (a)
3. (c)
4. (a)
5. (c)

- B) 1. To prevent mercury from returning back to the mercury bulb quickly.
2. Because it protects the earth from harmful rays coming from the Sun.

- 3 A) 1. Heat conductors
2. Ozone
3. Oxyacetylene flame
4. Neuron (nerve cell)

- B) 1. Protects the heart and the lungs.
2. Protects the brain

- 4 A) 1. bad
2. cerebellum
3. nitrogen oxide
4. cerebrum

- B) 1. Magnesium oxide (white matter) is produced and carbon deposits on the wall of the cylinder with black color.
2. There will be no life as living organisms will not be able to breathe.

Worksheets & Exams

School Exams on the First Term

2017/2018

(Guide Answers P. 38)

1 Cairo Governorate

(Guide Answers P. ??)

1 A) Choose the correct word between brackets:

- is a bad conductor of heat. (Aluminum – Iron – Air)
- Oxygen is produced during (combustion – photosynthesis – respiration)
- are long strips that fix muscles to bones. (Cartilages – Tendons – Ribs)
- results from the combustion of organic substances. (Carbon dioxide – Water vapor – Nitrogen)

B) Correct the underlined words in these statements by choosing the correct word from the following:

(Dust particles – Oxygen – Cerebellum – Cranial nerves)

- Spinal nerves are 12 pairs of nerves emerging from the brain.
- Cerebrum is maintaining the balance of the body during movement.
- Water vapor doesn't burn but helps in burning.
- Chemicals help in the condensing of the water vapor to form rains.

2 A) Choose from column (B) which suits column (A):

(A)	(B)
1. Oxygen cylinders	– is used in measuring the temperature of the human body
2. Sensitive two-arm scale	– releases carbon dioxide to extinguish fires
3. Fire extinguisher	– is used to measure the mass of gold
4. Medical thermometer	– are used in mechanical ventilation for patients

B) Write the scientific term:

- The form of energy that transfers from an object of high temperature to an object of low temperature. (.....)
- The layer in the outer atmosphere that protects the earth from the harmful radiation coming from the sun. (.....)
- The amount of matter in an object. (.....)
- The liquid metal that can be seen easily through the thermometer glass. (.....)

3 A) Give reason for each of the following by underlining the correct word:

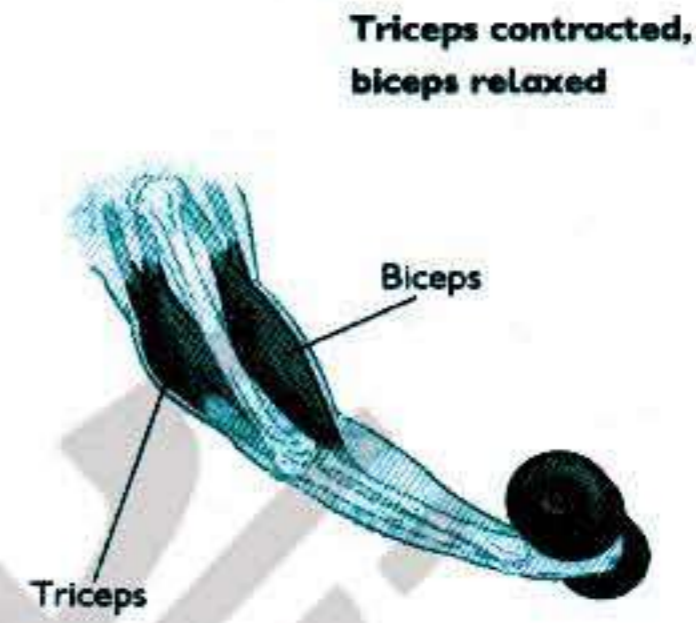
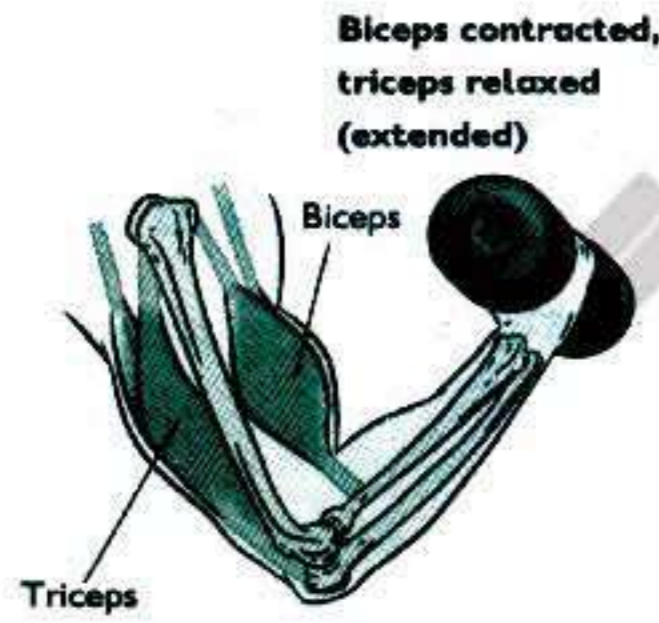
- Heavy blankets and wool clothes keep our bodies warm in winter because they are (bad – good) conductors of heat.

2. Atmosphere is attracted to the earth.
Because of (the rotation – the gravity) of the earth.
3. Withdrawal of your hand quickly on touching a hot surface.
Because (the spinal cord – the brain) makes a reflex action.

B) What will happen in the following cases?

1. Ironware such as the bridges pillars are not isolated by painting.
.....
2. Sitting long periods in front of the computer and television.
.....
3. Decreasing of green areas and forests removal.
.....

C) Complete the spaces to determine the type of the muscles seen in the figure, whether they are voluntary or involuntary:



1. The muscles seen in the figure are muscles.
2. One example of the involuntary muscles is

4 A) Put (✓) in front of the correct statement and (X) in front of the wrong one:

1. Weight of objects is stable and doesn't change from a place to another. ()
2. Carbon dioxide causes limewater to become turbid. ()
3. Nitrogen represents 21% of the volume of the atmosphere. ()
4. Different metals differ in conducting heat. ()

B) Complete the following statement:

1. Nitrogen are formed in the atmosphere during lightening and reaches soil with rain.
2. The central nervous system is composed of the and cord.

Worksheets & Exams

2 Cairo Governorate - Hadyek El Kobba Educational Directorate

(Guide Answers P. 38)

1 A) Complete the following:

1. The weight (Newton) equals (kilogram) x
2. The scale of the medical thermometer starts from and ends at
3. Mass is measured by using, whereas weight is measured by using
4. Oxygen gas is prepared by the decomposition of in the presence of
5. The number of spinal nerves is and the number of cranial nerves is

B) State one function of each of the following:

1. The rib cage.

.....

2. Thermometers.

.....

2 A) Write the scientific term of each of the following statements:

1. The structure by which muscles are fixed to the bones. (.....)
2. The liquid that is used in sterilizing the medical thermometer. (.....)
3. Materials that do not let heat flow through. (.....)
4. The force with which a body is attracted to the Earth. (.....)
5. The automatic response of the body to different stimuli. (.....)
6. The flame which is used for cutting and welding metals. (.....)

B) Give reasons for:

1. Cooking pots are made of aluminum.

.....

.....

2. Damage of medulla oblongata leads to death.

.....

.....

3. There is a constriction above the mercury bulb in the medical thermometer.

.....

.....



3 A) Correct the underlined parts in the following statements:

1. Shoulder joint is an immovable joint.
2. Carbon dioxide gas is necessary to form rust.
3. The ratio of nitrogen gas in the atmosphere is 21%.
4. The centers of thinking and memory lie in the spinal cord.
5. The highest degree in the Celsius thermometer represents the degree of water freezing.
6. Iron is used in making the handles of electric iron.

B) What happens if?

1. You blow in a jar contains clear limewater.

.....

2. Sitting for long times in front of the computer.

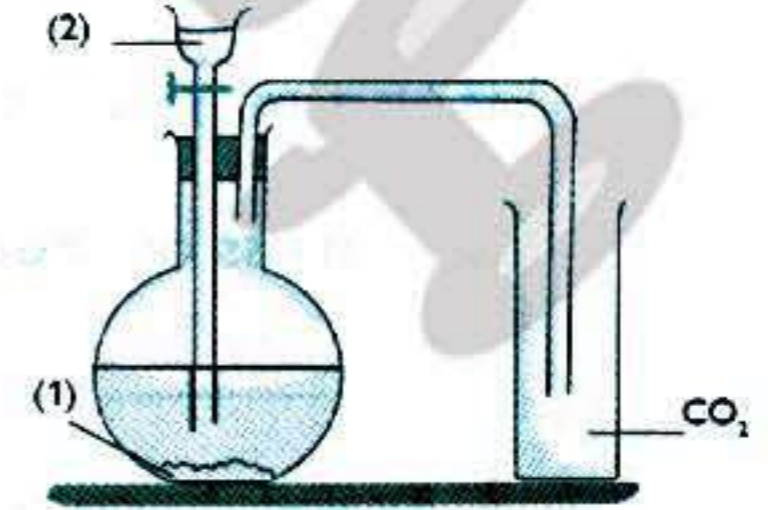
.....

4 A) Choose the correct answer:

1. Nitrogen gas is used in the manufacturing of
 (fire extinguishers – soil fertilizers – soft drinks – dry ice)
2. molecule is composed of three oxygen atoms.
 (Nitrogen – Ozone – Carbon dioxide)
3. An object whose weight is 20 Newton on Earth, so its mass equals
 (10 kg – 2 kg – 200 kg – 20 kg)
4. The operation of thermometer depends on the idea of the change of with the change in temperature.
 (gas volume – liquid volume – liquid density)

B) Look at the opposite figure, then answer:

1. Substance (1) is
2. Liquid (2) is
3. Mention two uses for the evolved carbon dioxide gas



Worksheets & Exams

3 Giza Governorate - Monshat El Qanater Directorate

(Guide Answers P. 39)

1 Complete the following:

1. Mass is a constant amount and doesn't affect by changing
2. Dendrites are connected with other neighboring neurons forming
3. thermometer is used to measure the temperature of the human body.
4. Oxygen gas is prepared from decomposition of in presence of
5. As the mass of a planet increases the of the planet increases and the of an object that exists on it increases.
6. Nitrogen is used in the manufacturing of which doesn't rust.

2 A) Give reasons for:

1. Clear limewater gets turbid if CO_2 gas passes through it.
.....
2. Damage of medulla oblongata leads to death.
.....
3. Mercury is preferred in making thermometer.
.....

B) Write the scientific term:

1. Flame is used in cutting and welding metals. (.....)
2. Materials which allow heat flow through. (.....)
3. The location at which bones meet each other. (.....)

3 A) If the mass of an object on the earth surface is 60 kg, calculate:

1. its mass on the surface of the moon.
.....
2. its weight on the surface of the moon.
.....

B) Choose the correct answer:

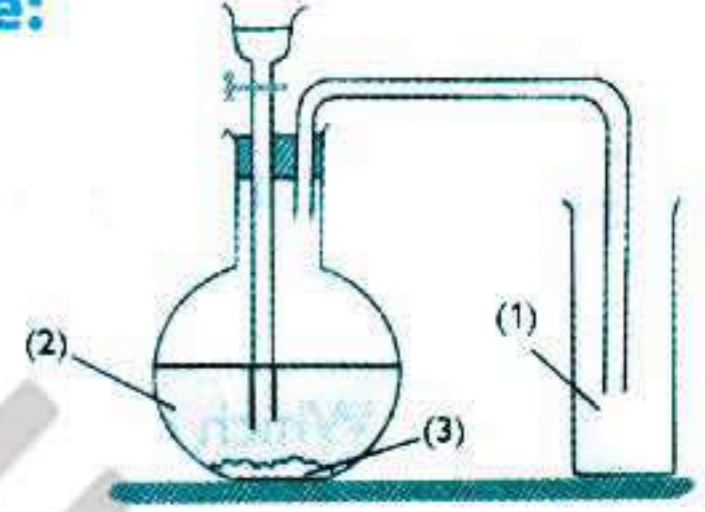
- The organ which is responsible for keeping the balance of the human body is
(cerebellum – spinal cord – medulla oblongata)
- The gas that is used in making the dry ice is
(oxygen gas – carbon dioxide gas – nitrogen gas)
- The joints which allow movement in one direction only are joints.
(immovable – slightly movable – freely movable)
- Handles of cooking pots are made of (copper – iron – plastic)

4 A) Put (✓) or (X):

- All materials are good conductors of heat. ()
- The mass of elements increases after combination with oxygen. ()
- There are 31 pairs of the cranial nerves. ()

B) Write what each label represents on the opposite figure:

- The produced gas is
-
-



تفوقك في أي مذكرة عليها العلامة دي
www.facebook.com/groups/zakrolypr6



هذا العمل حصري على موقع ذاكرولي التعليمي ولا يسمح بنشره في أي مواقع أخرى
لمزيد من أعمالنا تفضل بزيارة موقعنا على الانترنت <https://www.zakrooly.com>

Worksheets & Exams

4 Giza Governorate - El Warak Directorate

(Guide Answers P. 39)

1 A) Complete the following sentences:

1. Mass is a constant value that doesn't change by changing
2. Handles of cooking pots are made of
3. The main source of oxygen gas is process.
4. The number of cranial nerves in the human body is
5. Nitrogen gas represents % in air.
6. The vertebral column consists of vertebrae.

B) Mention one function of the following:

1. Ribcage.

.....

2. Medical thermometer.

.....

2 A) Choose the correct answer:

1. connect muscles to bones. (Joints – Tendons – Fibers – No correct answer)
2. Which of the following is responsible for keeping the body balance?
(Cerebellum – Two cerebral hemispheres – Spinal cord – No correct answer)
3. The weight is measured by balance.
(sensitive – common – spring – one arm with pointer)
4. is the gas which is used with acetylene gas in welding metals.
(nitrogen – hydrogen – carbon dioxide – oxygen)
5. The centers of thinking and memory lies in
(cerebellum – nerve cells – two cerebral hemispheres – medulla oblongata)
6. The fastest metal in conducting heat is (iron – copper – aluminum – gold)

B) Give one reason for:

1. Using nitrogen gas in filling car tires.

.....

2. Damage of medulla oblongata causes death.

.....

3 A) Write the scientific term:

1. Materials that allow heat to pass through. (.....)
2. Areas between vertebrae of vertebral column that separate and protect them from friction. (.....)
3. A gas composed of three oxygen atoms. (.....)
4. An organ responsible for the reflex actions of the body. (.....)
5. A liquid used in making thermometers. (.....)
6. A gas used in making ammonia. (.....)

B) If the mass of an object on Earth surface = 60 kg, calculate:

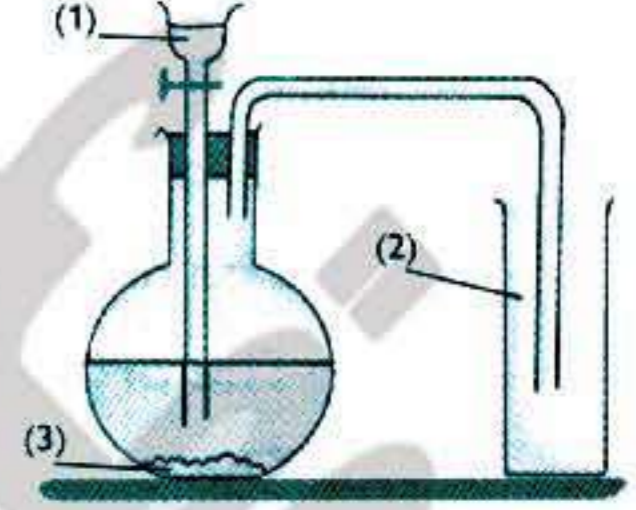
1. Its mass on moon =
2. Its weight on Earth's surface =

4 A) Put (✓) or (X):

1. Heat transfers from hot objects to cold objects. ()
2. The mass of materials decrease after combination with oxygen gas. ()
3. The scale of Celsius thermometer starts from 35°C to 42°C. ()
4. Elbow is from the freely movable joints. ()
5. Nervous cell axon is covered by fatty sheath. ()
6. To keep the nervous system healthy, practice exercises. ()

B) Label the figure:

1.
2.
3.



Worksheets & Exams

5 Giza Governorate - Science Department

(Guide Answers P. 39)

1 A) Complete the following sentences:

- is the device that is used to measure the mass of an object, while is the device that is used to measure its weight.
- Handles of cooking pots are made of
- The number of spinal nerves is and the number of cranial nerves is
- The graduation of the medical thermometer starts from and each degree is divided into parts.
- Liquefied nitrogen is used in the treatment of
- is the liquid that is used in making thermometers.
- Ozone molecule is composed of atoms.

B) Mention one function for each of the following:

- Oxy-acetylene flame.
.....
- Cerebellum.
.....

2 A) Write the scientific term for each of the following:

- The long strips that fix the muscles to bones. (.....)
- The materials that don't allow heat to flow through. (.....)
- It forms protein that builds up the body. (.....)
- The amount of matter in an object. (.....)
- The organ which is responsible for reflexes. (.....)
- The measuring unit of weight. (.....)
- The phenomenon that increases the temperature of the earth's surface. (.....)
- The building unit of the nervous system. (.....)

B) What will happen in the following cases...?

- There is no constriction in the medical thermometer.
.....
- The over intake of stimulant materials such as tea and coffee.
.....

Worksheets & Exams

6 Giza Governorate - Dokki Directorate

(Guide Answers P. 40)

1 A) Complete the following sentences:

1. Weight is measured by using and its measuring unit is
2. is used to measure the temperature of different liquids, while is used to measure the temperature of the human body.
3. The number of spinal nerves is, while the number of cranial nerves is
4. The human locomotory system consists of two systems which are the system and the system.

B) What happens when?

1. Adding yeast to dough on making bread.
.....
2. Putting a lighting magnesium ribbon in a cylinder filled with nitrogen gas then adding some drops of water to the produced substance.
.....

2 A) Choose the correct answer:

1. Oxygen gas is prepared in the laboratory from decomposition of hydrogen peroxide in the presence of as a catalyst.
(carbon dioxide – manganese dioxide – iron oxide)
2. The indicator that helps us to express the hotness or coldness of the body is
(mass – weight – temperature)
3. The joints that allow movement in one direction is joints.
(slightly – immovable – freely)
4. Respiration and combustion processes consume gas.
(oxygen – nitrogen – chlorine)
5. The fastest metal in conducting heat is
(copper – iron – aluminum)
6. The part that is responsible for keeping the balance of the body is
(cerebrum – cerebellum – medulla oblongata)

B) Give a reason for each of the following:

1. In the medical thermometer there is a constriction above the mercury bulb.
.....
2. Muscles have an important role in movement.
.....



3. Although oxygen is consumed during respiration, its percentage remains stable in the atmosphere.

3 A) Correct the underlined words:

1. Medulla oblongata controls the voluntary movements as walking. (.....)
2. Maximum temperature in Celsius thermometer represents freezing water. (.....)
3. Oxy-acetylene flame is used in cooking food. (.....)
4. The axon of the neuron is covered with a gelatinous layer. (.....)
5. Iron is used in the manufacture of the handles of the electric iron. (.....)
6. Ozone gas consists of four oxygen atoms. (.....)

B) A body whose mass on the earth surface is 30 kg, calculate:

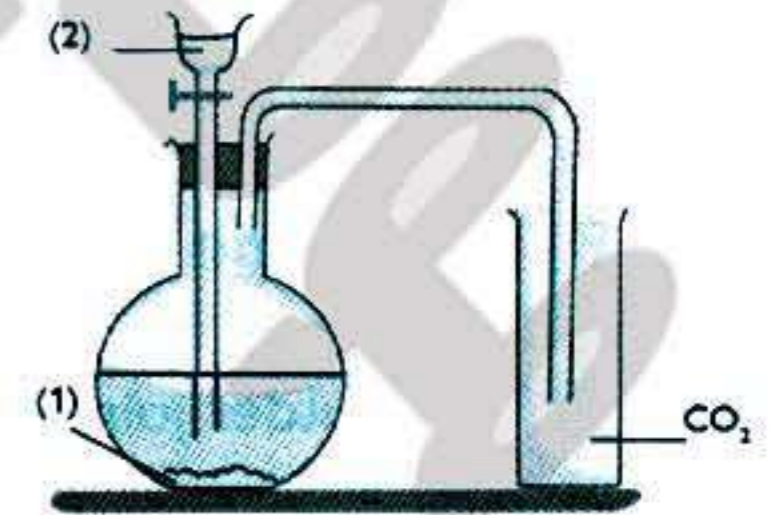
1. Its mass on the surface of the moon
2. Its weight on the surface of the earth
3. Its weight on the surface of the moon

4 A) Write the scientific term for each of the following:

1. Gas that is used in the manufacture of stainless steel. (.....)
2. Materials that don't let heat pass through. (.....)
3. The chemical substance that results from the combination between oxygen and nitrogen during lighting. (.....)
4. Ligaments that tie muscles to bones. (.....)
5. The automatic response of the body to different stimuli. (.....)
6. The part of the brain that is responsible for regulating heartbeats. (.....)

B) Look at the following figure, then answer:

1. Substance number (1) is
 2. Liquid number (2) is
- Carbon dioxide gas is collected by upward displacement of air. Why?
.....
 - Among the properties of the produced gas is making the turbid.



Worksheets & Exams

7 Alexandria Governorate - Wasat Directorate

(Guide Answers P. 40)

1 A) Write the scientific term for each of the following:

1. The amount of matter in an object. (.....)
2. The building unit of the nervous system. (.....)
3. Strong bands that connect the muscles to the bones. (.....)
4. The speed automatic response of the body to external stimuli. (.....)

B) What is the importance of the following:

1. Celsius thermometer
2. The ozone layer

2 A) Choose the correct answer form between brackets:

1. The gas that is mixed with oxygen for cutting and welding metals is
(nitrogen – hydrogen – acetylene – water vapor)
2. The bone that connects the ribs from front is
(femur – skull – sternum – humerus)
3. The mass of a half-liter of distilled water equals
(100 gm – 150 gm – 500 gm – 1000 gm)
4. Among the good conductors of heat is
(wool – wood – plastic – iron)

B) Underline the unsuitable word in the following and mention the reason:

1. Shoulder joint – femur joint – wrist joint – elbow joint.
.....

2. Two cerebral hemisphere-spinal cord – medulla oblongata – cerebellum.
.....

3 A) Complete the following:

1. The scale of the medical thermometer starts from °C to °C.
2. pairs of nerves arise from the brain, while pairs arise from the spinal cord.
3. The weight of an object depends on, and
4. The fastest metal in conducting heat is

B) Give reasons for the following:

1. Carbon dioxide gas is collected by displacement of air upwards and isn't collected by displacement of water.
.....
2. Mercury is used in making thermometers.
.....

4 A) Correct the underlined words in the following:

1. Hydrogen peroxide is used as a catalyst in preparing oxygen in the lab.
2. The occurrence of the fermentation process in the dough nitrogen gas to release.
3. Vinegar is used in sterilizing the medical thermometer before usage.
4. The white matter in the spinal cord has the shape of letter H.

B) If the weight of a person is 600 newton on the earth's surface, then calculate its:

mass on earth then find its weight and mass on the moon's surface.

The mass on the earth =

.....

.....

The weight on the moon =

.....

The mass on the moon =

.....

.....



Worksheets & Exams

8 Alexandria Governorate - Al Montazh Educational Directorate

(Guide Answers P. 40)

1 A) Complete the following:

1. The scale of the Celsius thermometer starts from 0°C and ends at 0°C .
2. maintain the balance of body during movement, while the centers of thinking and memory lie in the
3. The backbone in the human consists of vertebrae with between them to prevent their friction during movement.
4. Oxygen combines with lighted magnesium to form, which is a substance.
5. and are voluntary muscles.

B) Give reasons for:

1. When preparing nitrogen gas air passes through the solution of concentrated sodium or potassium hydroxide.
.....
.....

2. The damage of the medulla oblongata causes death.
.....
.....

2 A) Choose the correct answer from between brackets:

1. The measuring unit of weight is (gm – kg – newton – ton)
2. The fastest metal in conducting heat is (aluminum – copper – iron – steel)
3. is from the gases that have a very pungent smell.
(Ammonia – Oxygen – Nitrogen – Carbon dioxide)
4. All the following damage the nervous system except
(addiction – noise – stimulants – physical exercise)

B) What is the importance of each of the following?

1. Tendons
2. Manganese dioxide
3. Spring scale
4. Liquefied nitrogen



3 A) Write the scientific term:

1. It is an involuntary response to different stimuli. (.....)
2. It is the layer that protects the earth from the harmful radiation that comes from the sun. (.....)
3. The materials that don't let heat flow through. (.....)
4. The amount of matter in an object. (.....)

B) Complete the following table:

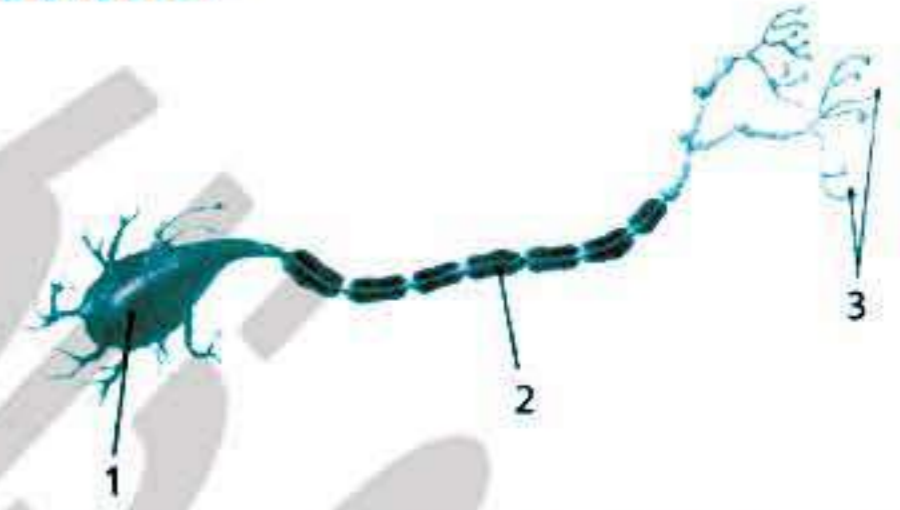
Points of comparison	Oxygen gas	Carbon dioxide gas
Its percentage in air
The solubility in water

C) What happens if ...?

1. You shake the medical thermometer before using it.
.....
2. You increase the intake of the stimulating substances like coffee.
.....

4 A) Look at the opposite figure, then answer the questions:

1. The figure represents:
2. Label the figure:
Number 1 refers to
- Number 2 refers to
- Number 3 refers to



B) If the mass of an object on earth is 6 kg, calculate its weight on earth, its weight on the moon, then find its mass on the moon:

- Weight on earth =
- Weight on the moon =
- Mass on the moon =

C) Correct the underlined words:

1. Water is used in making thermometers because it does not stick to the wall of the capillary tube.
2. The elbow joint is one of the freely movable joints.
3. Among the sources of oxygen gas is the burning of the organic substances.
4. The spinal cord consists of a white matter which is in the shape of letter H.
5. The medical thermometer is used in measuring the temperature of liquids.

Worksheets & Exams

9 Qalubia Governorate

(Guide Answers P. 41)

1 A) Complete the following sentences:

1. The number of spinal nerves is and the number of cranial nerves is
2. is used in measuring the temperature of the human body whereas is used in measuring the temperature of liquids.
3. Oxygen is prepared from in the presence of

B) Mention the function of the following:

1. Cerebellum
.....
2. Plastic or wood handles of cooking pots
.....
3. Ozone layer
.....
4. Catalyst
.....

2 A) Write the scientific term for each of the following sentences:

1. The process that is performed by green plants in which carbon dioxide is absorbed from air to produce food and oxygen. (.....)
2. The amount of material (matter) in an object. (.....)
3. A cylindrical axis connected to the cell body and covered with a fatty layer called myelin sheath. (.....)
4. The process that is performed by adding yeast fungus to dough on making bread. (.....)

B) Give reasons for:

1. The weight of anybody differs according to the planet it exists on.
.....
2. Nitrogen is used in filling car tires.
.....
3. The brain is the main control center in the human body.
.....
4. Using oxyacetylene flame in cutting metals.
.....



3 A) Choose the correct answer from the following:

- The grey matter in the spinal cord appears in the shape of letter
a. H b. F c. A d. K
- The fastest metal in heat conduction is
a. iron b. aluminum c. copper d. magnesium
- Newton is almost equal to the weight of an object whose mass is grams.
a. 10 b. 100 c. 1000 d. 10000
- The liquid used in sterilizing the medical thermometer is
a. mercury b. ethyl alcohol c. water d. oil

B) Problem:

- If the mass of an object on earth is 60 kg, then calculate:

- Its weight on the surface of the earth.
.....
- Its weight on the surface of the moon.
.....
- Its mass on the surface of the moon.
.....

4 A) Put (✓) or (X) and correct the wrong one:

- The mass of an object is measured by spring scale. ()
- The spinal cord is responsible for reflex action in human body. ()
- Carbon dioxide is used to make soft drinks. ()
- The heat transfers from cold body to hot body. ()

B) Correct the underlined words in the following statements:

- The elbow joint is one of the immovable joints. (.....)
- The mercury bulb prevents mercury from going back to the bulb quickly. (.....)
- The medulla oblongata lies below cerebral hemispheres. (.....)
- Insulating glass windows are made by bonding three sheets of glass. (.....)

Worksheets & Exams

10 Gharbia – Samanoud Educational Administration

(Guide Answers P. 41)

1 A) Complete the following:

- conducts heat faster than aluminum and iron.
- The gravitational force for a balloon when the distance between the balloon and the center of the Earth decreases.
- are found between the vertebrae of the backbone.
- gas is used in refrigeration, while flame is used in welding metals.
- We use to sterilize the clinical thermometer before using it.

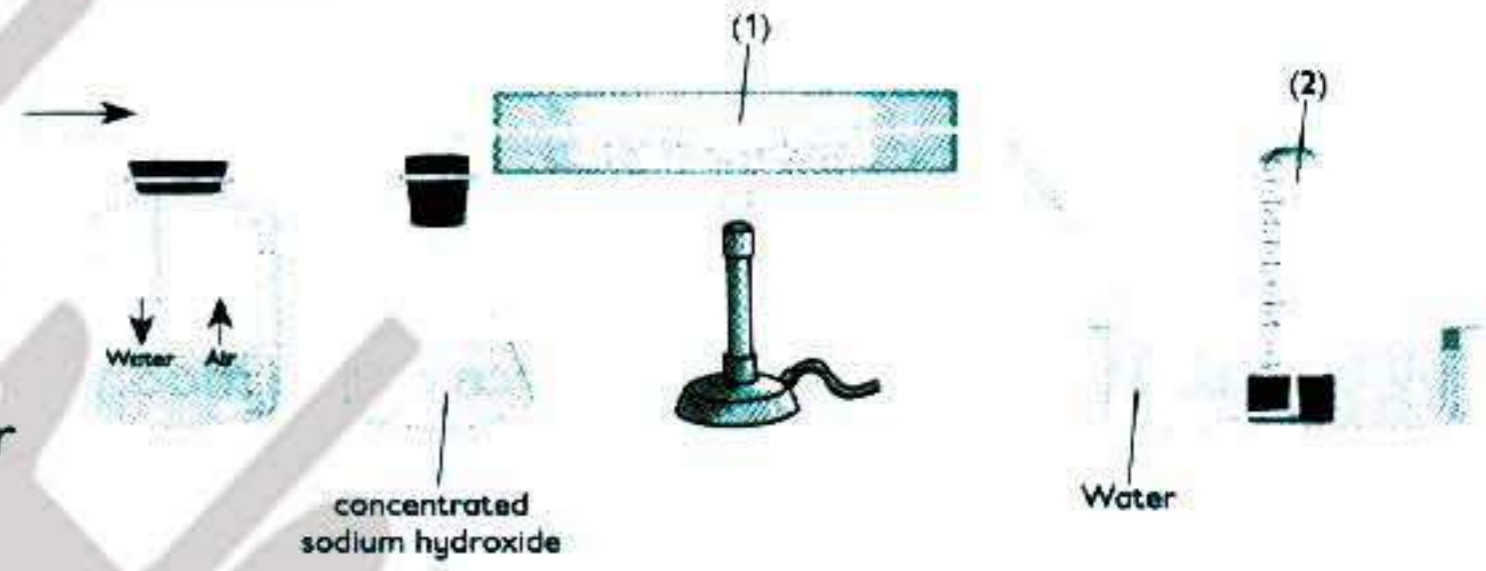
B) Look at the opposite figure then answer:

1. Write what each label represents:

(a)

(b) gas.

2. Why is atmospheric air passed over label no. (1)?



3. What happens when a lighted magnesium ribbon is placed in a cylinder filled with the produced gas, then some water drops are added to the produced substance?

2 A) Write the scientific term for each of the following:

- The gas that raises the temperature of Earth when its percentage increases in air. (.....)
- The area of connection between dendrites of neighboring neurons. (.....)
- The degree of hotness or coldness of a body. (.....)
- The bone which connects the first 10 pairs of ribs interiorly. (.....)

B) Give a reason for each of the following:

- Medulla oblongata helps in breathing.
.....
- Although smoke and dust are considered air pollutants, they have an important role in air.
.....

3 A) Choose the correct answer for each of the following:

- When your finger touches a plant with sharp thorns, the resulted nerve impulses are transmitted to the spinal cord through
 a. motor nerve fiber b. sensory center c. sensory nerve fiber d. (a) & (c)
- Water molecule consists of atoms.
 a. one oxygen atom and two nitrogen b. one oxygen atom and two hydrogen
 c. one nitrogen atom and two oxygen d. one hydrogen atom and two oxygen
- The effect of contraction and relaxation of muscles transfers to the bones through
 a. tendons b. joints c. dendrites d. limbs
- When the temperature of mercury increases, its regularly.
 a. volume decreases b. mass increases c. volume increases d. (b) & (c)

B) Give one example for each of the following:

- An immovable joint:
- A catalyst:
- The measuring device of small masses:
- Life application on heat insulators:

4 A) Complete the following table:

	Celsius thermometer	Medical thermometer
1. Range of scale
2. Constriction
3. Usage

B) Problem:

A body whose weight is 20 Newton on the surface of the moon. Calculate:

- Its weight on the surface of the earth.
- Its mass on the surface of the earth.

.....

.....

.....

.....

Worksheets & Exams

11 Gharbia - Gharbia Educational Directorate - Science Inspectorate

(Guide Answers P. 41)

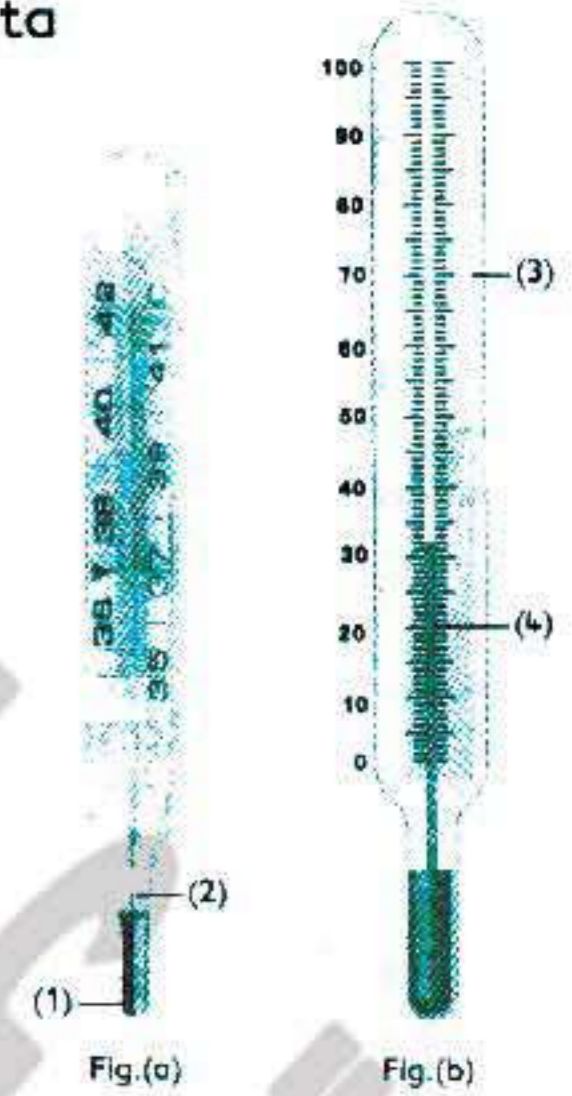
1 A) Choose the correct answer in each of the following:

- The gas which is used in making dry ice is gas.
 - carbon dioxide
 - oxygen
 - nitrogen
- When a balloon rises upward from Earth surface, the weight of the person
 - increases
 - decreases
 - doesn't change
- Among the freely movable joints is
 - knee
 - elbow
 - shoulder
- Magnesium ribbon keeps burning inside a cylinder full of oxygen gas forming
 - white substance
 - black substance
 - (a) & (b)
- keeps the body balance during motion.
 - Cerebellum
 - Cerebrum
 - Medulla oblongata
- The main source of nitrogen is
 - water
 - air
 - ozone

B) Look at the opposite figure, then answer:

- Figure (a) is thermometer.
Figure (b) is thermometer.
- Label the figure by using the following words:
(Constriction/ thick glass tube/ capillary glass tube/ mercury bulb)

(1)	(2)
(3)	(4)



2 A) Write the scientific term for each of the following:

- The gas that exists in the atmosphere and protects the Earth from harmful radiations coming from the sun. (.....)
- The instrument that is used to measure the weight of an object. (.....)
- The system which includes the brain and the spinal cord. (.....)
- The form of energy that transfers from an object to another if they differ in temperature. (.....)
- The gas that combines with oxygen to produce a flame whose temperature is sufficient to melt metals. (.....)
- The degree of hotness or coldness of a body. (.....)

B) Put (✓) or (X):

1. Medulla oblongata controls the voluntary movements. ()
2. Carbon dioxide gas is used in filling car tires. ()
3. Oxygen molecule consists of three oxygen atoms. ()
4. Aluminum conducts heat. ()
5. Carbon dioxide gas reacts with clear limewater forming a white precipitate of calcium carbonate which is insoluble in water. ()
6. Kilogram is equal to the mass of one paper clip. ()

3 Complete the following using the words between brackets:

1. Heat transfers from temperature object to temperature object. (equal – high – low)
2. The main idea to make a thermometer is the change of of the liquid by changing (volume – mass – temperature)
3. During photosynthesis process, green plants use gas and release gas. (N_2 – O_2 – CO_2)
4. Among the measuring devices of mass is scale, while the measuring unit of weight is (spring scale – Newton – digital)
5. During the preparation of oxygen gas, hydrogen peroxide decomposes into and (water – air – oxygen)
6. is from the immovable joints, while is an involuntary muscle. (Heart – Elbow – Skull)

4 Choose from column (B) what is suitable to column (A):

(A)	(B)
1. Tendons	a. is rapid combination between element and O_2
2. Oxidation	b. is used in making insulating glass windows.
3. Joints	c. prevent friction between vertebrae.
4. Air	d. are long strips that join muscles to bones.
5. Cartilages	e. is a slow combination between O_2 and an element.
6. Combustion	f. are the positions at which bones meet.

Worksheets & Exams

12 Beheira - Rasheed Administration - Science Supervision

(Guide Answers P. 42)

1 A) Complete the following sentence:

1. Mass is measured by using, while weight is measured by using
2. Oxygen gas is prepared from in the presence of
3. The number of spinal nerves is pairs, while the number of cranial nerves is pairs.
4. Heat transfers from an object of temperature to an object of temperature.

B) If a mass of an object on the earth's surface is 60 kg, then calculate:

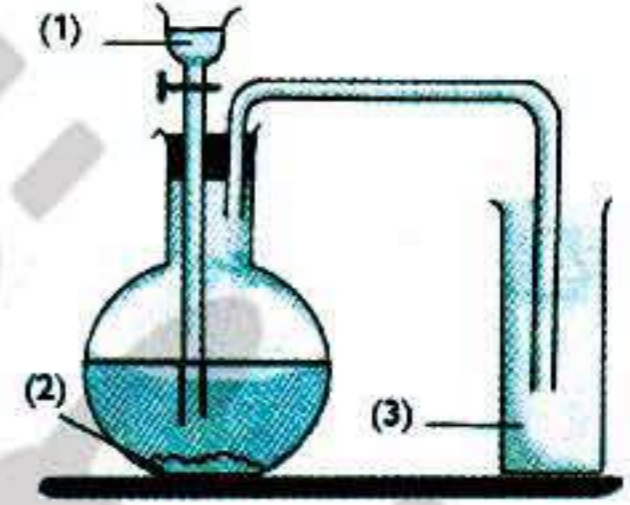
1. Its weight on the earth's surface
2. Its weight on the moon's surface
3. Its mass on the moon's surface

2 A) Write the scientific terms:

1. The building unit of the nervous system. (.....)
2. The bony box in which the brain is located. (.....)
3. The gas that consists of three atoms of oxygen. (.....)
4. The structures that fix muscles to bones. (.....)

B) Look at the opposite figure and answer the questions:

1. Label the figure:
 - (a)
 - (b)
 - (c)
2. Mention two uses of the produced gas



3 A) Give a reason for:

1. Nitrogen is used in filling the car tires.
2. Making handles of cooking pots: from plastic and wood.
3. Objects fall downward to the earth.

4. In the medical thermometer, there is a constriction above the mercury bulb.
-

B) Choose the correct answer:

1. The gravitational force that affects on an apple whose mass is 200 g = Newton
(2 – 200 – 2000)
2. The beginning and the ending of the scale in the Celsius thermometer is
(1:100 – 0 :100 – 35 :42)

4 A) What happens in the following cases ...?

1. Over intake of stimulating substances such as coffee.
.....
2. You suddenly touch a hot surface.
.....

B) Correct the underlined word:

1. From the freely movable joints is knee.
2. Medulla oblongata is responsible for reflex action.
3. Mercury is a bad conductor of heat.
4. Respiration and combustion processes consume CO₂.

تفوقك في أي مذكرة عليها العلامة دي
www.facebook.com/groups/zakroolypr6



هذا العمل حصري على موقع ذاكرولى التعليمي ولا يسمح بنشره في أي مواقع أخرى
لمزيد من أعمالنا تفضل بزيارة موقعنا على الانترنت <https://www.zakrooly.com>

Worksheets & Exams



تفوقك في أي مذكرة عليها العلامة دي
www.facebook.com/groups/zakroolypr6

13 Beheira - Damanhour Directorate

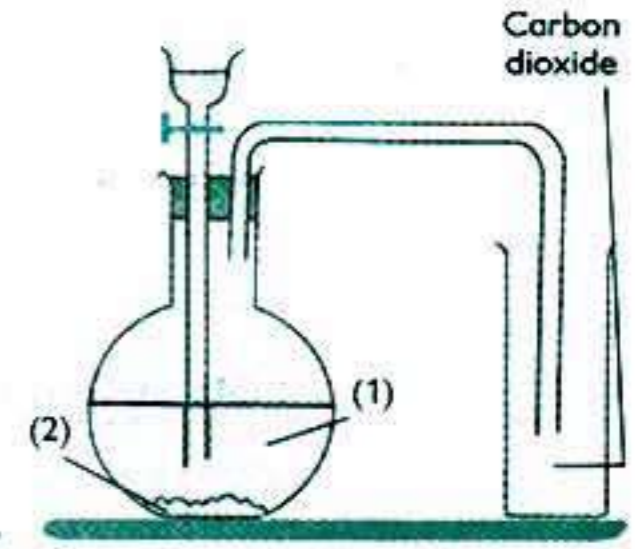
(Guide Answers P. 42)

1 A) Complete the following:

1. Mass is measured by scale, while weight is measured by scale.
2. The number of cranial nerves is pairs and the number of spinal nerves is pairs.
3. The scale of the medical thermometer starts from °C and ends at °C.

B) Look at the opposite figure, then answer the following:

1. The matter (1) is, while the liquid (2) is
2. Carbon dioxide gas is collected by because it is
3. Mention one use of carbon dioxide gas



2 A) Correct the underlined words in each of the following:

1. Shoulder joint is an immovable joint. (.....)
2. Heat transfers from cold object to hot object. (.....)
3. The liquid that is used in the medical thermometer is water. (.....)
4. Exposing a body to sunlight provides the body with vitamin (A). (.....)

B) If an object's mass on the Earth = 60 Kg. Calculate:

1. Its mass on the moon
2. Its weight on the Earth

C) What happens when ...?

– Leaving iron nails in moist air for a long time .
.....

3 A) Write the scientific term for each statement of the following:

1. The materials that don't let heat flow through. (.....)
2. The base structure unit of the nervous system. (.....)
3. The gas used in the manufacture of ammonia to produce fertilizers. (.....)
4. The layer in the atmosphere that protects the Earth from harmful radiation coming from the sun. (.....)



هذا العمل حصري على موقع ذاكرولى التعليمى ولا يسمح بنشره فى أى مواقع أخرى
لمزيد من أعمالنا تفضل بزيارة موقعنا على الانترنت <https://www.zakrooly.com>

B) Give a reason for each of the following:

1. Cooking pots are made of aluminum.

.....

2. We must shake the medical thermometer well before using it.

.....

3. Although oxygen is consumed during respiration, its percentage remains stable in the atmosphere.

.....

4 A) Choose the correct answer for each of the following:

- fix muscles on bones. (Joints – Tendons – Muscle fibers)
- controls reflex actions. (Spinal cord – Cerebellum – Cerebrum)
- The mass of half liter of water equals grams. (5 – 50 – 500)
- The fastest metal in conducting heat is (aluminum – copper – iron)

B) State the function (importance) for each of the following:

1. The skull

.....

2. Celsius thermometer

.....

3. Oxy-acetylene flame

.....

Worksheets & Exams

14 Beheira Governorate – Edku Educational Directorate

(Guide Answers P. 42)

1 Complete the following statements:

- conducts heat faster than aluminum.
- Oxygen gas represents% of the volume of the atmosphere and its symbol is
- The main control center in human body is and it is located inside a bony box called
- The medical thermometer scale starts from °C to °C and every degree is divided into parts.
- During lightening gas reacts with gas and Nitrogen oxides are formed.
- The number of vertebrae of the backbone is vertebrae, while the number of ribs of the rib cage is pairs of ribs.

2 A) What would happen in the following cases ...?

- A body moving away from the center of the earth, according to its mass and weight.
.....
.....
- Yeast is added to dough on making bread.
.....
.....

B) Choose the correct answer:

- Nitrogen gas is used in the manufacture of
a. soda water b. ammonia c. bread
- The organ which is responsible for the reflex action is
a. the brain b. cerebellum c. spinal cord
- Dry ice is the solid gas.
a. carbon dioxide b. oxygen c. nitrogen
- Cooking pots are made of
a. aluminum b. stainless steel c. A and B

3 A) Write the scientific term:

- The device that is used to measure the temperature of liquids. (.....)
- The automatic response of the body to different stimuli. (.....)

B) An object, its mass is 0.6 kilogram on the Earth's surface, calculate:

(Write the used law)

1. The weight of this object on the Earth's surface.

.....

2. Its weight on the moon's surface.

.....

C) Give a reason:

1. During preparation of nitrogen gas in laboratory we let the air pass over the hot copper.

.....

2. Heart muscle is from the involuntary muscles.

.....

4 A) Correct the underlined words:

1. Wood is from the good conductors of heat.

(.....)

2. Green plants consume oxygen gas during photosynthesis process.

(.....)

3. The main idea to make a thermometer is changing the mass of the liquid according to the temperature.

(.....)

4. Tendons are the sites where bones meet.

(.....)

B) Mention one function of:

1. Bones of the upper limbs

.....

2. The medulla oblongata.

.....

C) Look at the opposite figure and answer:

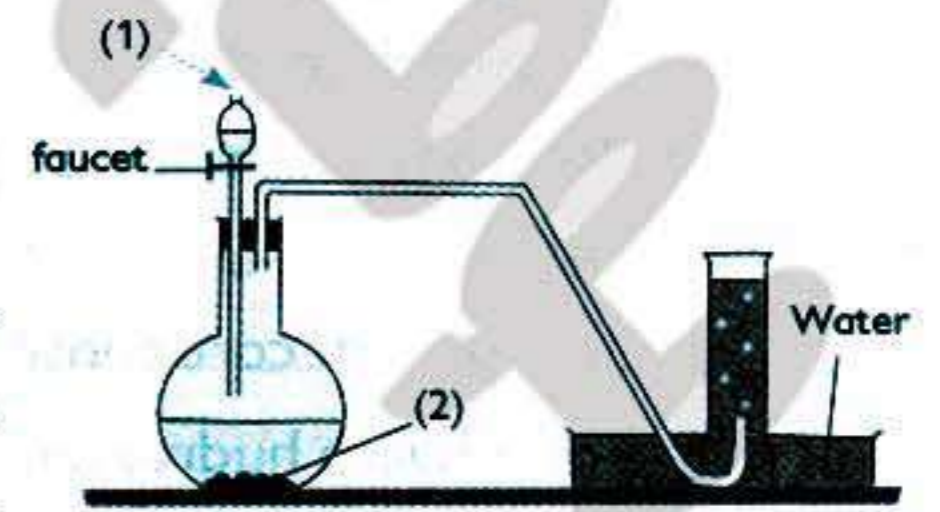
– The opposite figure represents the preparation of

..... gas.

Number (1) is

Number (2) is

– We collect the produced gas by displacing the



Worksheets & Exams

15 Damietta Governorate

(Guide Answers P. 43)

1 A) Complete the following statements:

- The is used in measuring the temperature of liquids whereas the is used in measuring the temperature of the human body.
- Water consists of the union of one atom of with two atoms.
- The human skeletal system consists of and
- Mass is measured by using and the measurement unit of the weight is

B) Correct the following statements:

- The skull joints are from slightly movable joints.
- When the mass of an object on Earth surface equals 6 kilograms, then its weight on moon's surface is 60 Newtown.
- Aluminum conducts heat faster than copper and iron.
- The atmosphere protects the earth by absorbing the gases coming from outer space.

2 A) Choose the correct answer:

- are among bad conductors of heat.

a. Iron and aluminum	b. Copper and glass
c. Glass and wood	d. Aluminum and copper
- The scientist who discovered nitrogen gas is called

a. Andres Celsius	b. Joseph Pristhy
c. Danial Rutherford	d. Antoine Lavoisier
- All the following are from the components of central nervous system except

a. spinal nerves	b. two cerebral hemispheres
c. spinal cord	d. medulla oblongata
- When the exhaled air passes through clear limewater, it turns turbid due to the formation of

a. calcium carbonate	b. calcium oxide
c. calcium hydroxide	d. calcium sulphats
- The measuring device of the weight is

a. sensitive balance	b. two arm scale	c. the spring balance	d. digital scale
----------------------	------------------	-----------------------	------------------
- fix muscles with bones.

a. Tendons	b. Joints	c. Muscular fibers	d. (a and b)
------------	-----------	--------------------	--------------



B) What happens in the following states...?

1. The overuse of stimulation drugs.

.....

2. The percentage of carbon dioxide gas increases in the atmospheric air.

.....

3 A) Write the scientific term for the following statements:

1. The amount of matter that the body contains. (.....)

2. The spontaneous response of the body to different stimuli. (.....)

3. The gas that is prepared from hydrogen peroxide. (.....)

4. Type of muscles that act spontaneously and cannot be controlled. (.....)

5. It is the degree of hotness or coldness of a body. (.....)

6. A flame used in cutting and welding metals. (.....)

B) Look at the following figure, then answer the questions:

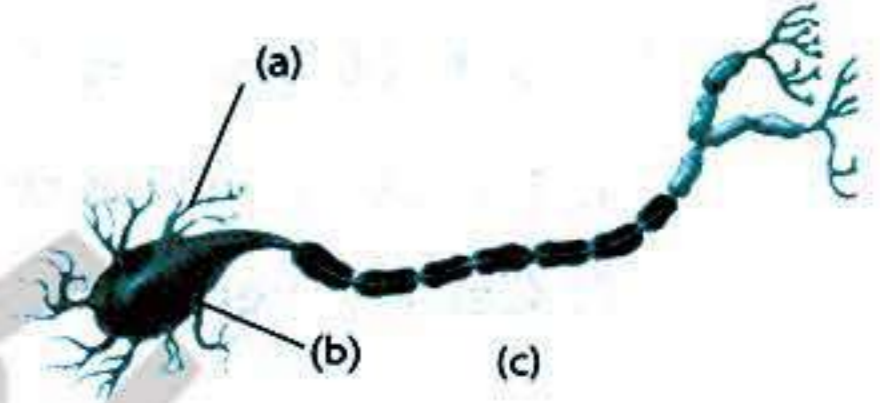
1. This figure indicates the structure of

2. Label the points on the figure:

a.

b.

c.

**4 A) Give reasons:**

1. The handles of cooking pots are made of wood or plastic while the cooking pots are made of aluminum.

.....

2. During preparation of nitrogen gas in laboratory, air is passed in potassium hydroxide solution and over a hot copper.

.....

3. The weight of the body differs according to the planet where the body exists.

.....

B) Mention one function:

1. The constriction above the blub in the medical thermometer.

.....

2. The two cerebral hemispheres.

.....

Worksheets & Exams

16 Sharkia Governorate - Diarb Negm Educational Directorate

(Guide Answers P. 43)

1 A) Complete the following:

1. The weight measuring unit is, where the mass measuring unit is
2. According to heat conduction the materials are divided into and
3. gas is used in composing gunpowder, while gas is used in welding metals.
4. Brain consists of two cerebral hemispheres, and
5. Backbone consists of vertebrae, while rib cage consists of pairs of ribs.

B) Mention the importance of:

1. Joints:
2. Cerebellum:

2 A) Correct the underlined words:

1. Mass is the force that attracts the objects to the earth. (.....)
2. Celsius thermometer is used to measure the temperature of human body. (.....)
3. Tendons are the location where the two bones meet each other. (.....)
4. The number of cranial nerves are 31 pairs of nerves. (.....)

B) What happens when ...?

1. The ratio of CO₂ gas increases continuously in the atmospheric air.
.....
2. Something gets very close to your eyes.
.....

3 A) Write the scientific term for each of the following:

1. A device used to measure the temperature. (.....)
2. A gas used to make stainless steel that doesn't rust. (.....)
3. The skeleton that include skull, backbone and rib cage. (.....)
4. The building unit of the nervous system. (.....)

B) Give reasons for:

1. The atmosphere is very important for the continuity of life on the earth's surface.

.....

2. Damage of the medulla oblongata leads to death.

.....

4 A) Choose the correct answer:

1. If the weight of a body is 20 newton on the earth's surface, then its mass equals
(200 kg – 20 kg – 2 kg)
2. The number of cranial nerves equals pairs of nerves.
(31 – 12 – 21)
3. Hydrogen peroxide is used in preparing gas.
(N₂ – O₂ – CO₂)
4. is from the freely movable joints.
(Elbow – Thigh – Knee)

B) If an object's mass = 6 kg on Earth, calculate:

- Its mass on the moon
- Its weight on the Earth
- Its weight on the moon



Worksheets & Exams

17 South Sinai - Tur Sinai Educational Directorate

(Guide Answers P. 43)

1 A) Complete the following sentences:

1. Mass is measured by using, while weight is measured by using
2. thermometer is used in measuring water temperature and its scale starts from
3. In photosynthesis process the plant absorbs gas and produces gas.
4. gas is called azote which means lifeless.
5. Among the examples of the freely movable joints is
6. In the atmospheric air oxygen gas exists by ratio % and nitrogen gas exists by ratio %.

B) If the mass of an object on the earth's surface equals 15 kg, then calculate:

1. Its mass on the moon's surface.
2. Its weight on the earth's surface.

2 A) Correct the under line word:

1. Oxygen gas does not burn and does not help in burning.
.....
2. The weight of an object is constant and does not change by changing the place.
.....
3. All materials are good conductors of heat.
.....
4. Plastic is used to make cooking pots.
.....
5. The vertebral column consists of 12 pairs of ribs.
.....
6. Copper is bad conductor of heat.
.....

B) Give a reason for each of the following:

1. Nitrogen gas is used in filling car tires.
2. We wear wool clothes in winter.
3. The yeast is added to dough to make bread.

C) Mention one benefit only for the following:

1. Bad conductors of heat.
2. Spinal cord.
3. Oxygen gas.

3 A) Write the scientific term for each of the following:

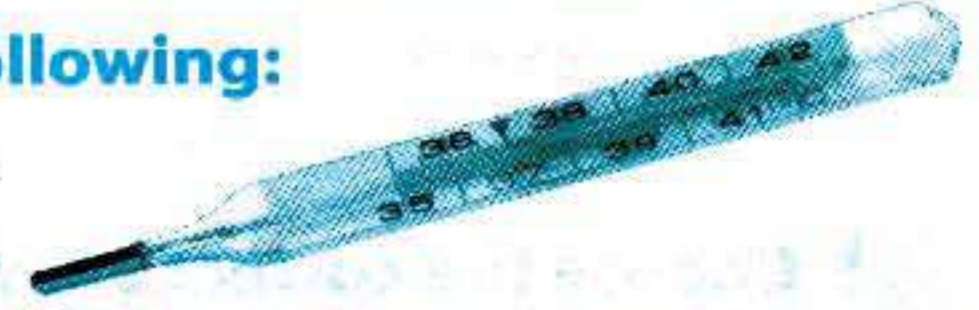
1. The force with which a body is attracted to the earth. (.....)
2. A gas is composed of three atoms of oxygen. (.....)
3. The amount of matter in an object. (.....)
4. The material that let heat flow through. (.....)
5. The flame that is used in cutting and welding metals. (.....)
6. The gas that is used in the manufacture of ammonia gas. (.....)

B) What happens in the following cases ...?

1. All the materials which man use are good conductors of heat.
.....
2. Leaving a wet nail for several days in humid air.
.....
3. Sitting for a long period in front of computer.
.....

C) Look at the opposite figure, then answer the following:

1. Mention its name.
2. Mention its uses.
3. Mention the name of the liquid which exists inside it.



4 A) Choose the correct answer from the following:

1. The best metal in heat conduction is (copper – aluminum – iron)
2. The gray matter in the spinal cord appears in the shape of letter (H – F – A)
3. The measuring unit of weight is (Newton – gram – kilogram)
4. Nitrogen gas is used in the manufacture of (soda water – fertilizers – dry ice)
5. The gas which makes limewater turbid is (oxygen – nitrogen – carbon dioxide)
6. Hydrogen peroxide dissociates in the presence of manganese dioxide into
(oxygen and hydrogen – oxygen and water – hydrogen and manganese)

B) Choose from column (B) what is suitable in column (A):

(A)	(B)
1. Joints	a- prevent the friction between vertebrae.
2. Tendons	b- is responsible for regulating the involuntary process.
3. Cerebellum	c- is responsible for regulating the voluntary movement.
4. Cartilages	d- are long strips that fix bones to muscles.
5. Medulla oblongata	e- is building unit of nervous system.
6. Cerebrum	f- the location where bones meet in the body.
	g- keeps the balance of human body.

Worksheets & Exams

18 Beni Suef - Beni Suef Educational Directorate

(Guide Answers P. 44)

1 A) Complete the following statements:

1. As the mass of the planet on which the body exists increases, the of the body increases.
2. There is a constriction in thermometer.
3. Nitrogen gas is used in the manufacturing of that does not rust.
4. Centers of thinking and memory are located in

B) Mention one function for:

1. Celsius thermometer

.....

2. Rib cage

.....

2 Choose the correct answer:

1. One newton equals (10 gm – 100 gm – 1000 gm)
2. Among the substances which are good conductors of heat is (plastic – wood – aluminum)
3. When exhaled air passes through clear limewater, it becomes turbid forming substance. (calcium carbonate – calcium hydroxide – calcium sulphate)
4. If nitrogen gas is combined with a burning magnesium ribbon and water is added, then gas evolves. (hydrogen – oxygen – ammonia)
5. Hydrogen peroxide is used in the preparation of (oxygen – carbon dioxide – nitrogen)
6. Among the freely movable joints is (elbow – shoulder – knee)

3 A) Correct the underlined words:

1. Iron is among the fastest elements in conducting heat.

.....

2. Among the materials that expand regularly is water.

.....

3. Oxygen represents 78% of air components.

.....

4. Vertebral column is made of 35 vertebrae.

.....

B) Give reasons for each of the following:

1. The weight of a person in a flying balloon is less than its weight on Earth.

.....

2. Wearing heavy woolen clothes in the winter.

.....

4 A) Write the scientific term:

1. The amount of matter in an object. (.....)

2. The indicator that helps us to express the hotness or coldness of an object. (.....)

3. The building unit of the nervous system. (.....)

4. It consists of upper and lower limbs. (.....)

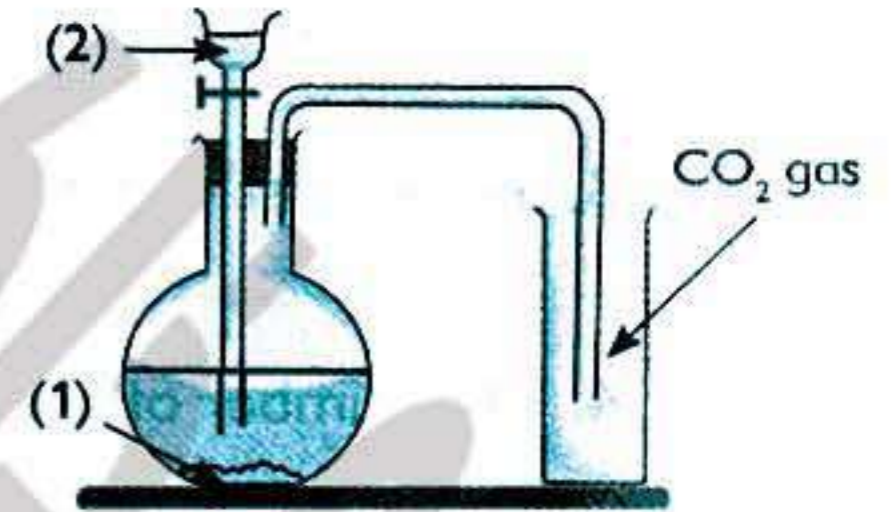
B) This apparatus represents the preparation of carbon dioxide gas in the laboratory, label the following:

1. Substance (1) refers to

.....

2. Liquid (2) refers to

.....



تفوقك في أي مذكرة عليها العلامة دي
www.facebook.com/groups/zakroolypr6

Worksheets & Exams

19 Beni Suef - Ehnasya Educational Directorate

(Guide Answers P. 44)

1 Complete the following statements:

- The mass is measured in unit, while the weight is measured in unit.
- During photosynthesis process, the plant absorbs gas and produces gas.
- Carbon dioxide can be prepared by adding to powder.
- The water freezes at degree and boils at degree.
- The balance scale is used in measuring, while the spring scale is used in measuring
- According to heat conductivity, materials are classified into materials and materials.

2 A) Choose the correct answer.

- The fastest material in conducting heat is
(iron – aluminum – copper – plastic)
- Which of the following gases is not an atmospheric gas?
(Oxygen – Nitrogen – Carbon dioxide – Ammonia)
- The planet on which a body's weight is 6 times its weight on the moon is
(Earth – Mars – Jupiter – Mercury)
- The number of spiral nerves is pairs.
(32 – 24 – 12 – 31)

B) Give reasons for:

- There is a constriction in the capillary tube of the medical thermometer.
.....
- Ozone layer is considered a protection layer for the Earth.
.....

3 A) Write the scientific term:

- The building unit of the nervous system. (.....)
- The amount of matter in an object. (.....)
- An organ in the central nervous system which is responsible for reflex actions. (.....)
- The indicator that helps us to express the degree of hotness or coldness of a body. (.....)

B) Mention the importance for each of the following:

1. Rib cage.

.....

.....

2. Two cerebral hemispheres.

.....

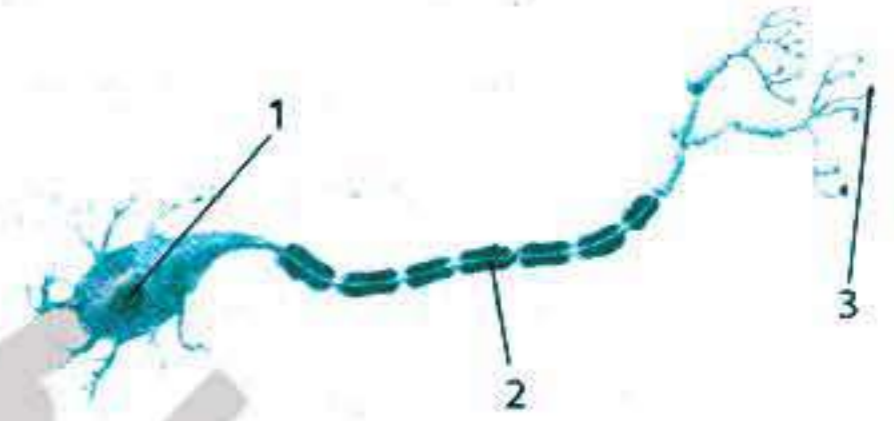
.....

4 A) Correct the underlined words.

1. The liquid used in thermometer is a alcohol.
2. There are 10 pairs of cranial nerves emerging from the brain.
3. Shoulder joint is from the slightly movable joints.
4. Salt is added to dough to make it porous and tasty.

B) Study the following figure and write the labels:

1.
2.
3.
4. The figure represents



Worksheets & Exams

20 Assuit Governorate - Science Supervision

(Guide Answers P. 44)

1 Complete the following statements:

1. The mass is measured in unit and the weight is measured in unit.
2. Oxygen gas is prepared from in presence of
3. The human skeletal system consists of and
4. The nerve cell consists of two principal parts and
5. The number of vertebrae of the backbone in human body is with cartilages.
6. The rib cage consists of pairs of ribs.

2 A) Put (✓) in front of the right statement and (X) in front of the false statement and correct the false ones:

1. Mass is the force with which a body is attracted to the earth. ()
2. Heat transfers from a cold object to a hot object. ()
3. Nitrogen is used in filling cars tires. ()
4. Handles of cooking pots are made of copper. ()
5. Shoulder joint is an immovable joint. ()
6. Spinal cord controls reflex actions. ()

B) What happens in these cases ...?

1. Increasing the percentage of carbon dioxide in atmosphere.
.....
2. Adding water to the lighted magnesium ribbon in nitrogen gas.
.....

3 A) Write the scientific term:

1. The substances which don't allow heat to pass through.
.....
2. A kind of thermometer which is used to measure the temperature of liquids.
.....
3. The main center of control in the human body.
.....
4. The flame which is used for cutting and welding metals.
.....



B) If the mass of a body is 12 kilograms on the earth's surface, then calculate:

1. The mass of the body on the moon.

.....

2. The weight of the body on the moon's surface.

.....

4 A) Notice the following figure and write the labels on it:



Complete the following:

1.
2.
3.
4.

B) Give a reason for each of the following:

1. We use carbon dioxide in fire extinguishing.

.....

2. Damage of the medulla oblongata may lead to death.

.....

3. The heart and lungs are surrounded by rib cage.

.....

Worksheets & Exams

21 Qena Governorate – Directorate of Education

(Guide Answers P. 45)

1 A) Write the scientific term for each of the following:

1. A form of energy that transfers from an object of high temperature to another object of low temperature. (.....)
2. The automatic response of the body to different stimuli. (.....)
3. The gas whose molecule consists of three oxygen atoms. (.....)
4. Materials that don't allow heat to flow through. (.....)

B) If the mass of an object on the earth's surface equals 6 Kg, then find the following:

1. The object's mass on the moon.
.....
2. The object's weight on the Earth.
.....
3. The object's weight on the moon.
.....

2 A) Complete the following sentences:

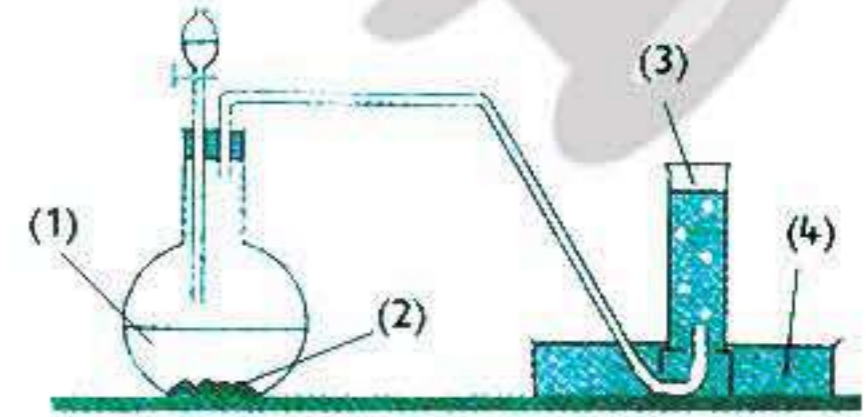
1. The basic structure unit of the nervous system is
2. is the degree of hotness or coldness of a body.
3. We use material to detect the presence of carbon dioxide gas in laboratories.
4. To measure the temperature of liquids, thermometer is used.

B) Give a reason for each of the following:

1. Cooking pots are made of copper or aluminum.
.....
2. Damage of medulla oblongata leads to death.
.....
3. Mercury is used in the manufacturing of thermometers (2 points)
.....

3 A) Label the figure:

1.
2.
3.
4.



B) What happens in the following cases ...?

1. The percentage of CO₂ in air increases.

.....

2. The front arm muscle contracts and the back arm muscle relaxes.

.....

3. When you touch a plant with sharp thorns.

.....

4 A) Choose the correct answer from between brackets:

1. The weight is measured by

(one arm scale – two arm scale – sensitive two arm scale – spring scale)

2. The number of spinal nerves is pair of nerves. (33 – 31 – 12 – 10)

3. is used to remove oxygen from air during the preparation of nitrogen gas.

(Hot copper – Sodium hydroxide solution – Ammonia gas – Water)

4. The scale of medical thermometer ranges from °C to °C.

((35 - 42) – (37 - 45) – (35 - 45) – (0 - 100))

B) Write the importance of each of the following:

1. Constriction in the medical thermometer.

.....

2. Tendons.

.....

3. Nitrogen gas (only two).

.....

Worksheets & Exams

22 Sohag - Ekhmeem Educational Directorate

(Guide Answers P. 45)

1 A) Complete the following statements:

1. Balance scale is used to measure, while is used to measure a body's weight.
2. The neuron consists of and
3. Copper is from conductors of heat, while is from the bad conductors of heat.
4. Carbon dioxide gas is important for the process in plants, while gas is important for the respiration process in living organisms.

B) What happens in the following cases ...?

1. The absence of nitrogen from the atmosphere.
.....
2. Knee joints become freely movable joints.
.....

2 A) Compare between medical thermometer and Celsius thermometer:

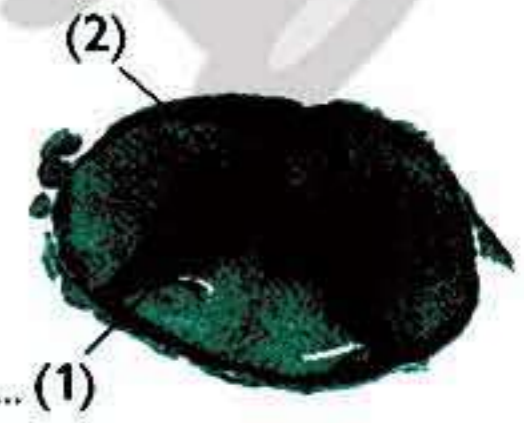
Points of comparison	Medical thermometer	Celsius thermometer
1. Usage		
2. Scale		
3. Constriction		
4. Used liquid		

B) Give a reason for each of the following:

1. Manganese dioxide does not change during the preparing of oxygen.
.....
2. There are cartilages between the vertebrae of the backbone.
.....

3 A) The opposite figure shows a cross-section of the spinal cord.
Answer the following:

1. Write the missing labels:
Matter (1)
Matter (2)
2. Mention the location of the spinal cord in the body



B) Write the scientific term for each of the following statements:

1. The flame which is used in cutting and welding metals. (.....)
2. The bony box that protects the brain. (.....)
3. It is the device that is used to measure the temperature. (.....)
4. Substance that is used to detect the presence of carbon dioxide in exhalation process. (.....)

4 A) If the weight of an object is 60 Newton on the earth's surface, then calculate the following: (mentioning the used law)

1. Its mass on the earth's surface.
.....
2. Its mass on the moon's surface.
.....
3. Its weight on the moon's surface.
.....

B) Define each of the following:

1. Involuntary muscles.
.....
2. Global warming.
.....

C) Mention one importance of each of the following:

1. The atmosphere
.....
2. Liquified nitrogen
.....



Worksheets & Exams

23 Sohag - El Balyana Educational Directorate

(Guide Answers P. 46)

1 A) Choose the correct answer:

- The number of cranial nerves is pairs of nerves. (31 – 21 – 12)
- Myelin sheath surrounds the
(nerve cell axon – cerebellum – spinal cord)
- are what fix muscles to bones.
(Tendons – Joints – Muscle fibres)
- Nitrogen is used to make which doesn't rust.
(iron – stainless steel – aluminum)

B) Mention one function for each of the following:

- Nitrogen gas for all living organisms.
.....
- The Celsius thermometer.
.....

2 A) Write the scientific term:

- The system which is composed of the brain and the spinal cord. (.....)
- The area at which two bones meet. (.....)
- Materials that let heat flow through. (.....)
- The device that is used to measure the mass of objects. (.....)
- The gas whose molecule consists of three atoms of oxygen. (.....)

B) An object's mass = 12 kg on Earth, calculate:

- Its weight on the Earth.
.....
- Its weight on the moon.
.....

3 A) Complete the following statements:

- An object's weight is measured in unit.
- Among the examples of bad conductors of heat are and
- The scale of the medical thermometer starts from and ends at



B) Give a reason for each of the following:

- Oxygen is collected by displacing the water downwards in the flask during its preparation in the laboratory.
.....
- Carbon dioxide is used in extinguishing fires.
.....
- Withdrawal of the hand quickly when it suddenly touches a hot surface.
.....

4 A) Correct the underlined word(s):

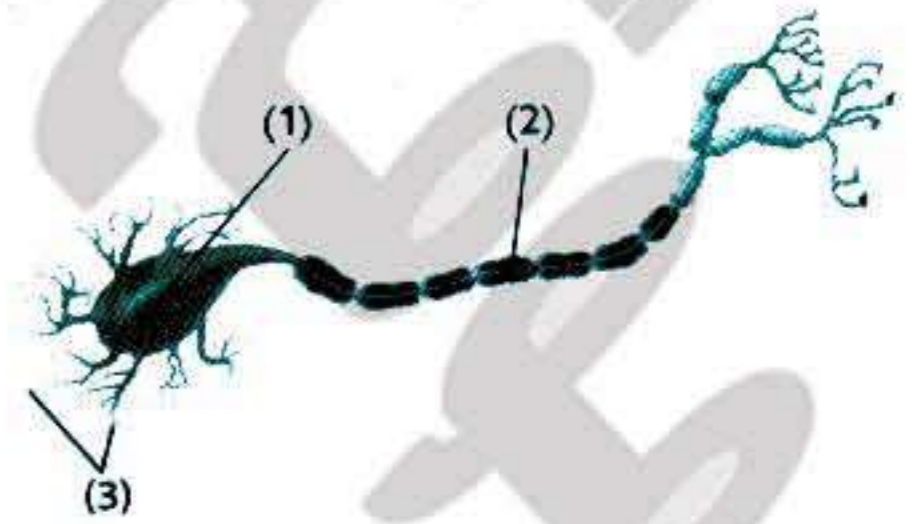
- Plastic is a good conductor of heat.
- The liquid which is used in the medical thermometer is water.
- Oxygen gas doesn't burn and doesn't help in burning.
- Knee joint is a freely movable joint.
- One of the components the nerve cell is the presence of blood vessels.

B) What happens in the following cases

- A nail wetted by water is exposed several days to humid air.
.....
- A man is exposed to noise continuously.
.....

C) Observe the following figure of the nerve cell and write the labels:

-
-
-



Worksheets & Exams

24 Sohag Governorate - Sohag Educational Directorate

(Guide Answers P. 46)

1 A) Complete the following:

- is measured in kilogram unit, while weight is measured in unit.
- and are from the examples of good heat conductors.
- In photosynthesis process the green plant uses gas and produces gas.
- The human nervous system consists of two major systems which are and
- Nitrogen gas is collected by downward displacement of
- There is a constriction in the thermometer.

B) If the mass of a body on the earth's surface is 6 kg. Calculate:

- Its weight on the earth's surface.
.....
- Its weight on the moon's surface.
.....

2 A) Put (✓) or (X):

- The measurement tool of weight is balance scale. ()
- The main source of nitrogen is the atmospheric air. ()
- The knee joint is from the freely (wide) movable joints. ()
- Oxygen gas represents 21% of the atmospheric air. ()
- Medical thermometer is used to measure the temperature of liquids. ()

B) Give a reason for each of the following:

- CO₂ is used to put out fires.
.....
- The infection of medulla oblongata leads to death.
.....
- Aluminum is used in the manufacturing of cooking pots.
.....

3 A) Choose the correct answer:

- The force with which the body is attracted to the earth is
(mass – weight – volume)

2. The liquid that is used in making Celsius thermometer is
(water – alcohol – mercury)
3. The molecule of nitrogen gas consists of of nitrogen.
(one atom – two atoms – three atoms)
4. The grey matter in the spinal cord appears in the shape of letter
(A – F – H)
5. is used in making the handles of the electric iron.
(Plastic – Iron – Aluminum)

B) Mention one function for each of the following:

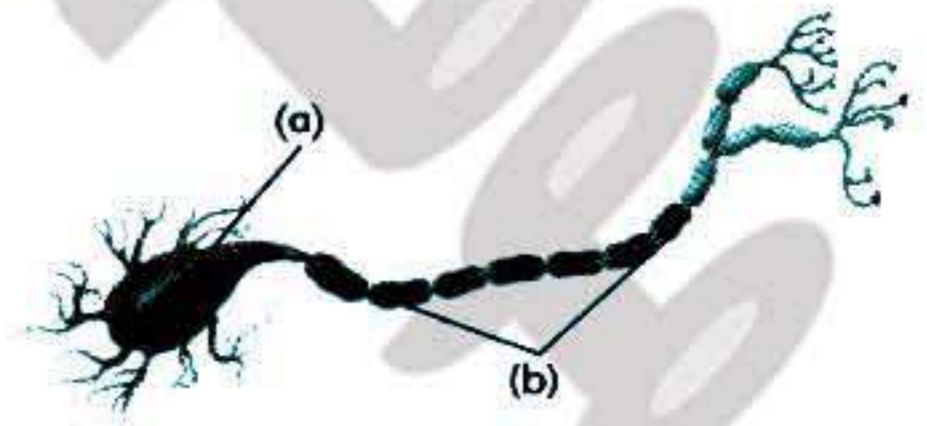
1. Clear limewater.
.....
2. Cartilages.
.....
3. Manganese dioxide in preparing oxygen gas
.....

4 A) Write the scientific term:

1. Materials which don't let heat to pass through. (.....)
2. The device that is used to measure the temperature. (.....)
3. The gas that is used in filling car tires. (.....)
4. What fixes muscles to bones. (.....)
5. The gas that is used in cutting and welding metals. (.....)

B) Look at the opposite figure, then answer:

1. What is its name?
2. Label the figure.
a)
b)



Worksheets & Exams

25 Aswan – Aswan Educational Directorate

(Guide Answers P. 47)

1 A) Complete the following:

1. The mass is measured in unit, while the weight is measured in unit.
2. The water freezes at and boils at
3. The percentage of carbon dioxide in atmosphere is and its symbol is
4. Among the substances which are good conductors of heat are and

B) Give a reason for each of the following:

1. The brain is located inside the skull.
.....
2. Nitrogen gas is used in filling car tires.
.....

2 A) Choose the correct answer from between the brackets:

1. The measuring tool of weight is
(one pan balance – two-pan balance – digital balance – spring balance)
2. Which of the following gases has the greatest percentage in the atmospheric air?
(Oxygen – Nitrogen – Carbon dioxide – Water vapor)
3. The cerebellum is responsible for
(thinking operations – balancing the body – reflex actions – regulating the heartbeats)
4. Weight (Newton) = mass (kg) ×
(10 – 100 – 1000 – 10000)

B) What happens if ...?

1. The percentage of carbon dioxide increased in the atmospheric air.
.....
2. Thigh joints are slightly movable joints.
.....



3 A) Give the scientific term for the following:

1. The amount of matter that a body contains. (.....)
2. The building unit of nervous system. (.....)
3. The liquid that is used in making thermometers. (.....)
4. The organ that consists of a grey matter in the form of letter H surrounded by the white matter. (.....)

B) Give one importance for the following:

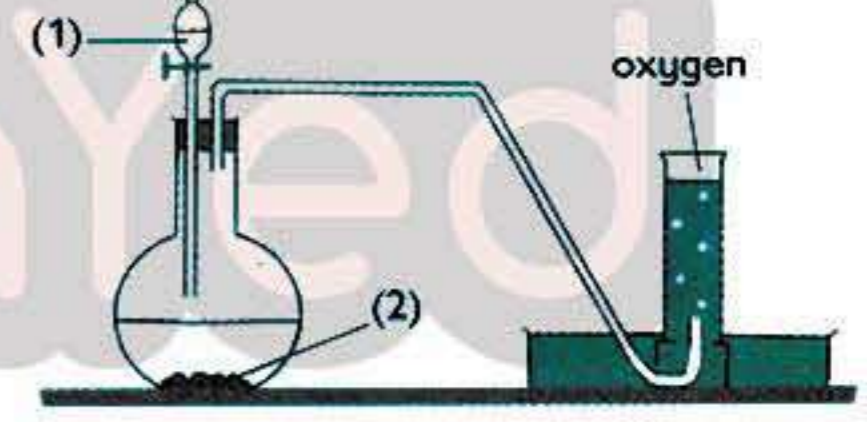
1. Rib cage.
.....
2. Clinical thermometer.
.....

4 A) Put (✓) or (X) in the front of the following statements:

1. Cooking pots and boilers are made of plastic. ()
2. The masses of substances decrease after combining with oxygen. ()
3. The skeleton of the lower limb consists of humerus bones, two fore arm bones and bones of the hand. ()
4. Legumes such as clover benefit from the nitrogen in the air. ()

B) Look at the opposite figure, then answer:

1. The liquid (1) is
2. The substance (2) is



تفوقك في أي مذكرة عليها العلامة دي
www.facebook.com/groups/zakroolypr6